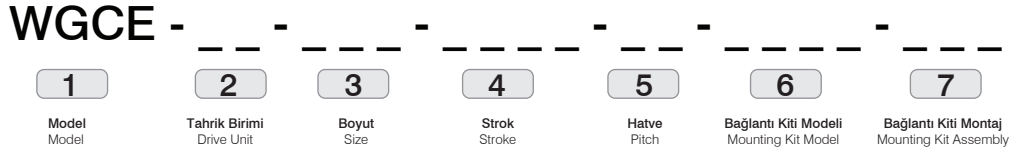


Sipariş Kodu / Ordering Code



1 - Model / Model

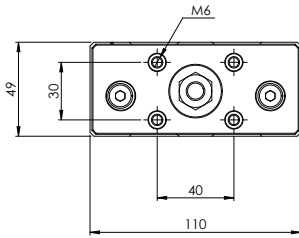
WGCE : Serisi Yataklamalı Lineer Aktüatörler / Series Guided Linear Actuators

2 - Tahrik Birimi / Drive Unit

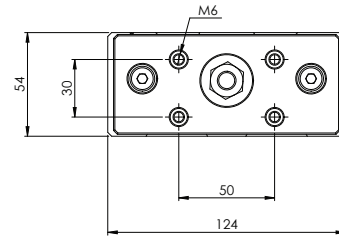
BS : Bilyalı Vidalı Mil / Ball Screw

LS : Adım Vidalı Mil / Lead Screw

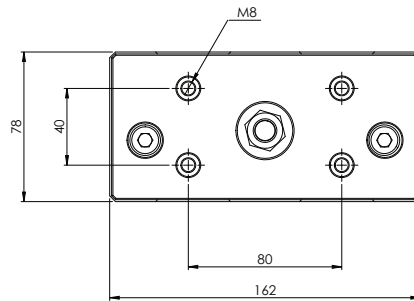
3 - Boyut / Size



WGCE - __ - **032**



WGCE - __ - **040**



WGCE - __ - **063**

Sipariş Kodu / Ordering Code

WGCE - - - - - -

- | | | | | | | |
|----------------|-----------------------------|---------------|-----------------|----------------|--|---|
| 1 | 2 | 3 | 4 | 5 | 6 | 7 |
| Model
Model | Tahrik Birimi
Drive Unit | Boyut
Size | Strok
Stroke | Hatve
Pitch | Bağlantı Kiti Modeli
Mounting Kit Model | Bağlantı Kiti Montaj
Mounting Kit Assembly |

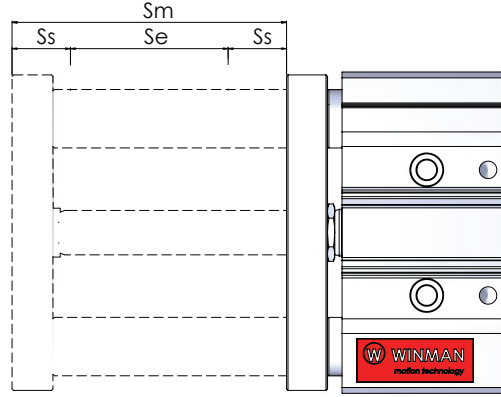
4 - Strok / Stroke
0000 : Maksimum 200 mm / Maximum 200 mm
Hareket Stroku / Movement Stroke

İstenilen çalışma strokuna ek olarak
2xHatve kadar her iki tarafta da boşluk bırakılması tavsiye edilir.
*In addition to the desired movement stroke,
it is recommended to leave a space on both sides until 2xPitch.*

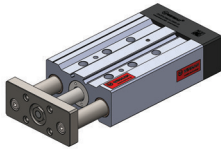
$$S_m = S_e + 2 \cdot S_s$$

$$S_s = 2 \cdot p$$

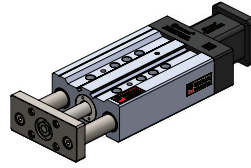
S_m : Hareket Stroku / Movement Stroke
 S_e : Etkin Hareket Stroku / Safety Stroke
 p : Vidalı Mil Hatvesi / Ball Screw Pitch


5 - Hatve / Pitch

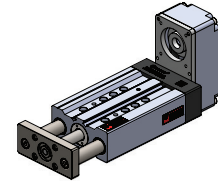
Tahrik Birimi Drive Unit	Bilyalı Vidalı Mil / Ball Screw			Adım Vidalı Mil / Lead Screw		
	5	10	20	5	10	12
Aktüatör Modeli Actuator Model						
WGCE - __ - 032		+			+	
WGCE - __ - 040	+	+		+		
WGCE - __ - 063		+	+			+

6 - Bağlantı Kiti Modeli / Mounting Kit Model


00 : Bağlantı Kitsiz
Without Mounting

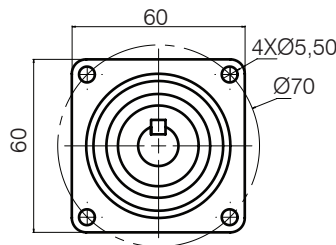


WDAK : Eksenel Kit
Axial Kit



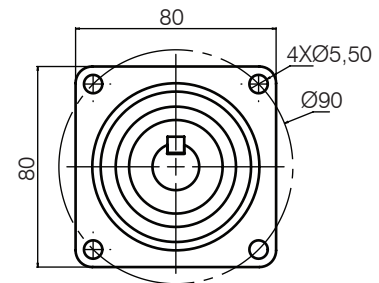
WDPK : Paralel Kit
Parallel Kit

Not 1 : Farklı motor tipleri ve ölçüleri için irtibata geçiniz. Note 1 : Please contact for different motor types and mounting sizes.
 Not 2 : Redüktörlü ürünler kullanmak için irtibata geçiniz. Note 2 : Please contact for to use reducer.

7 - Bağlantı Kiti Montaj / Mounting Kit Assembly


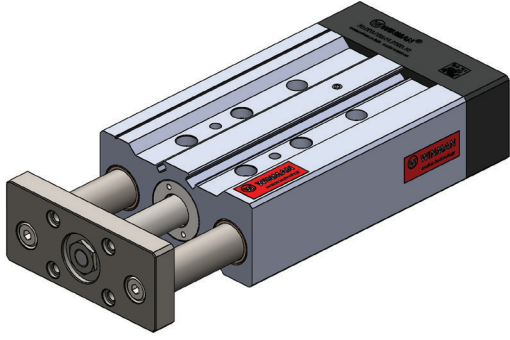
00 : Motorsuz
Without Motor

070 : Ø70 motor bağlantısı
Ø70 motor mounting



090 : Ø90 motor bağlantısı
Ø90 motor mounting

WINMAN WGCE Serisi Yataklamalı Linear Aktüatörler / WGCE Series Guided Linear Actuators

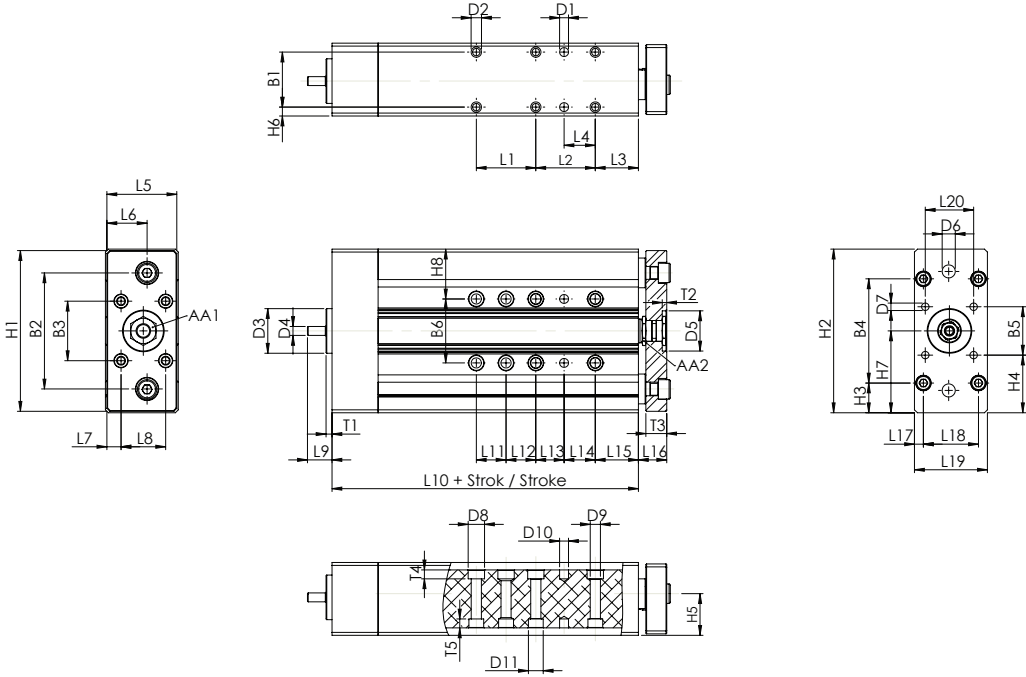


Özellikler / Specification

Boyut / Size		032	040	063
Maximum Eksenel Kuvvet Maximum Axial Force	N	800	1250	3100
Maximum Hız Maximum Speed	mm/s	500	500	1000
Stroklar Strokes	mm	50 - 80 - 100 - 160 - 200		
Pozisyonlama Hassasiyeti Position Accuracy	µm/mm	53/300		
Tekrarlama Hassasiyeti Repeating Accuracy	mm	< 0,05		
İvmeleme Max Acceleration	m/s ²	10		

Not : Verilen değerler teorik değerlerdir. Emniyet kat sayısını 5 almanızı öneririz.
Note : Calculated value are theoretical values. We recommend you to calculate safety factor as five(5).

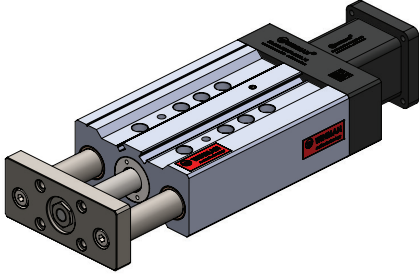
Teknik Çizim / Technical Drawing



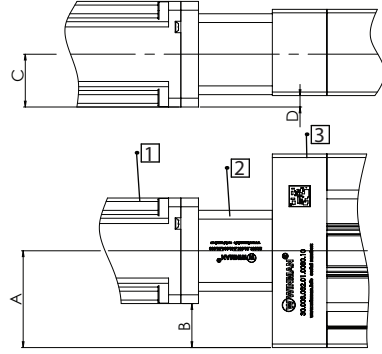
Boyut Size	AA1	AA2	B1	B2	B3	B4	B5	B6	D1	D2	D3	D4	D5
032	17	17	37	78	40	70	32,5	43	6	M6	30	6	27
040	17	17	42	88	50	88	38	51	6	M8	35	10	27
063	19	19	60	125	80	144	56,5	80	8	M10	45	13	29
Boyut Size	D6	D7	D8	D9	D10	D11	H1	H2	H3	H4	H5	H6	H7
032	G 1/4	M6	11	6,8	6	11	108	110	20	38,75	28	6	55
040	G 1/4	M6	11	6,5	6	11	118	124	18	43	29	6	62
063	G 3/8	M8	14	8,5	8	14	160	162	9	52,75	41	9	81
Boyut Size	H8	L1	L2	L3	L4	L5	L6	L7	L8	L9	L10	L11	L12
032	33,5	40	40	29	20	47	27	9,5	30	16,5	112	20	20
040	36,5	40	40	29	20	52	29	13	30	21,5	125,5	20	20
063	41	40	40	32	20	76	45	18	40	25,5	165,5	20	20
Boyut Size	L13	L14	L15	L16	L17	L18	L19	L20	T1	T2	T3	T4	T5
032	20	20	29	19	6	37	49	32,5	4	3	14	6	6
040	20	20	29	19	8,5	37	54	38	4	3	14	8	8
063	20	20	32	19	9	60	78	56,5	4	5,5	16	8,5	8,5

WDAK Eksenel Bağlantı Kiti / WDAK Axial Mounting Kit

Teknik Çizim / Technical Drawing

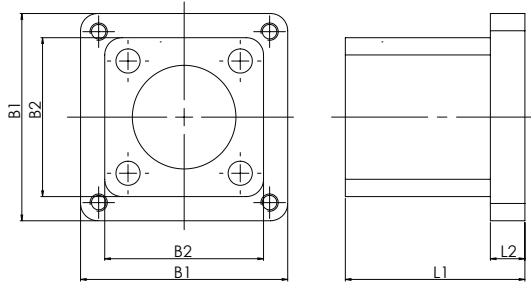


- 1 - Motor / Motor
- 2 - Kampana / Bellhousing
- 3 - Yataklamalı Lineer Aktüatör / Guided Linear Actuator



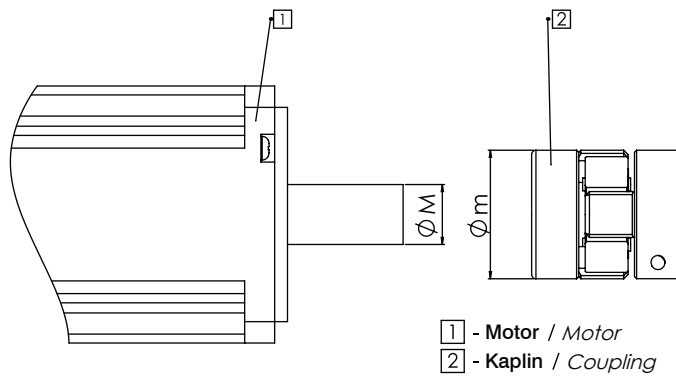
Boyut Size	A	B	C	D
032	55	25	30	6,5
040	62	37	29	4,5
063	81	50,5	37	2

Kampana / Bellhousing



Boyut Size	B1	B2	L1	L2
032	60	45	61	10
040	60	53	62	17
063	80	74	81	16

Kaplin / Coupling

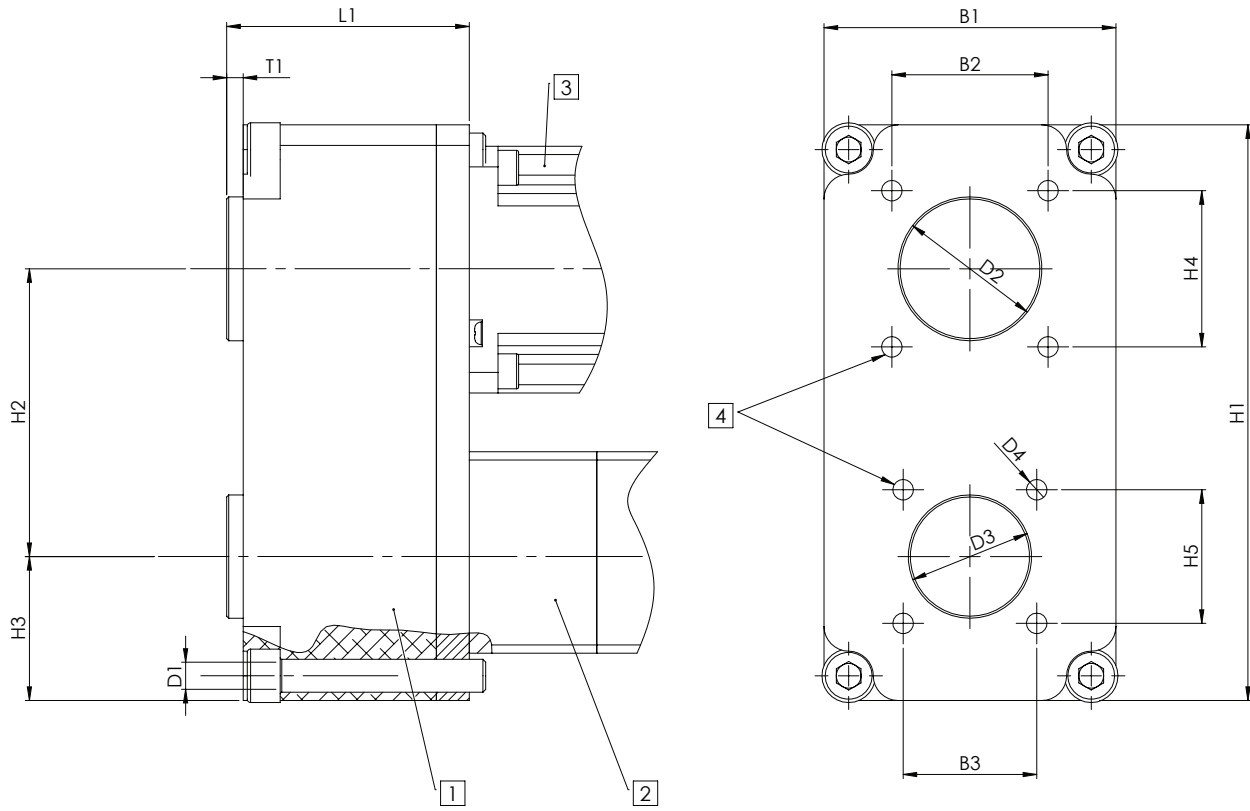
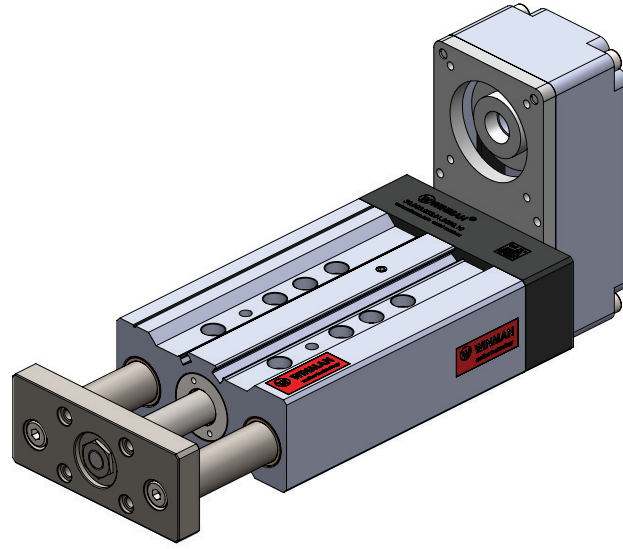


- 1 - Motor / Motor
- 2 - Kaplin / Coupling

Bağlantı Kiti Tipi Mounting Kit Type	M	m	Kaplin Modeli Coupling Model
WDAK-070	14	30	WWJL - 30CRD
WDAK-090	19	40	WWJL - 40CRD

WDPK Eksenel Bağlantı Kiti / WDAK Axial Mounting Kit

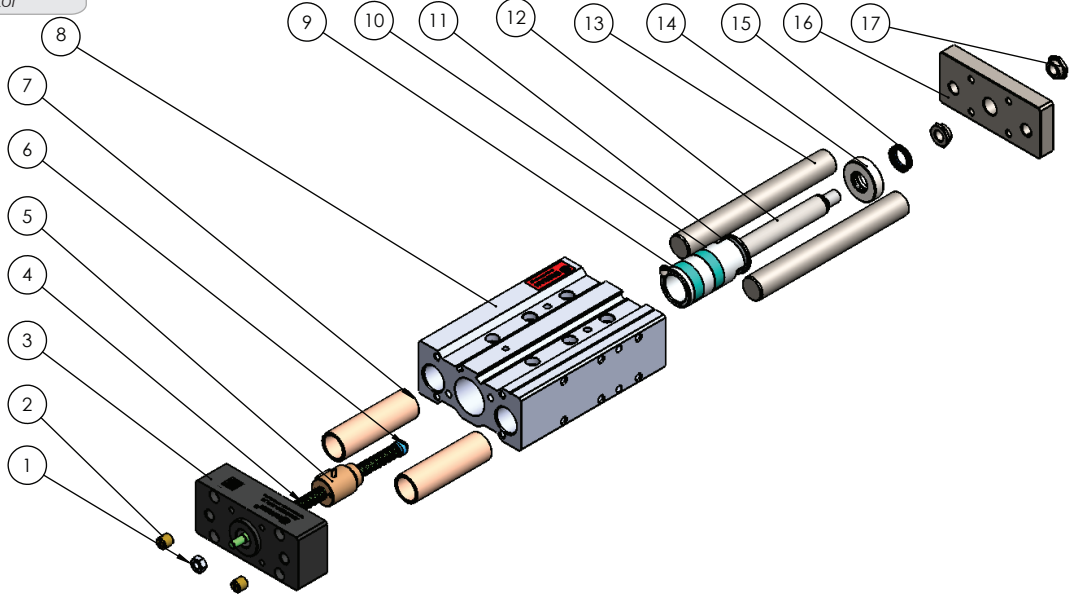
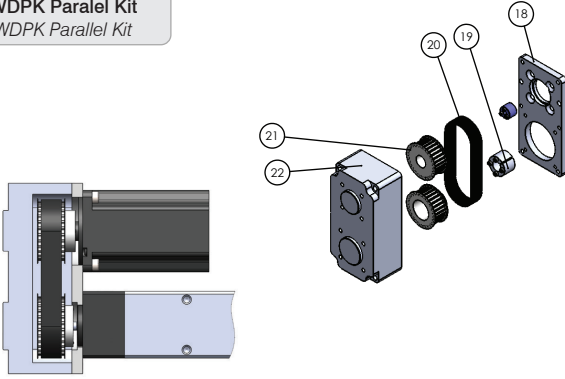
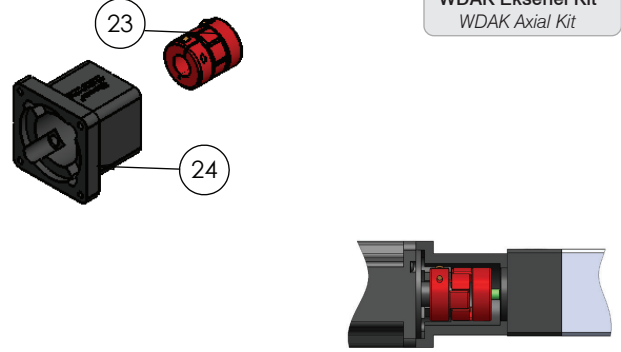
Teknik Çizim / Technical Drawing



- 1 - Paralel Kit / Parallel Kit
- 2 - Yataklamalı Lineer Aktüatör / Guided Linear Actuator
- 3 - Motor / Motor
- 4 - Montaj Delikleri / Mounting Thread

Boyut Size	L1	T1	B1	B2	B3	D1	D2	D3	D4	H1	H2	H3	H4	H5
032	59	4	71	38	32,5	M6	35	30	M6	140	70	35	38	32,5
040	59	4	71	38	32,5	M6	35	30	M6	140	70	35	38	32,5
063	64	4	86	-	56,5	M6	-	45	M8	168	85	40	-	56,5

Montaj / Assembly

 WGCE Yataklamalı Lineer Aktüatör
 WGCE Guided Linear Actuator

 WDPK Paralel Kit
 WDPK Parallel Kit

 WDAK Eksenel Kit
 WDAK Axial Kit


Parça Piece	Miktar Qty	Parça Adı Part Name	Montaj Assembly
1	2	Kontra Somun / Counter Nut	Modül Module
2	2	Sinter Susturucu / Muffler	
3	1	Arka Kapak / Back Block	
4	1	Vidalı Mil / Ball Screw	
5	1	Vidalı Somun / Ball Nut	
6	1	Mil Ucu Yatağı / Ball Screw Bearing	
7	2	Yataklama Burcu / Bearing Bush	
8	1	Profil / Profile	
9	2	Yataklama Bandı / Guided Ring	
10	1	Piston / Piston	
11	1	Manyetik Halka / Magnetic Ring	
12	1	Silindir Mili / Cylinder Rod	
13	2	Kolon Mili / Colon Rod	
14	1	Ön Kapak / Front Block	
15	1	Boğaz Keçesi / Throat Seal	
16	1	Plaka / Pleyt	
17	2	Plaka Somunu / Pleyt Nut	
18	1	WDPK Paralel Kit Kapak / Parallel Kit Cover	Paralel Bağlantı Parallel Mounting
19	2	Konik Burç / Traper Bushing	
20	1	Dişli Kayış / Toothed Belt	
21	1	Dişli Kasnak / Timing Belt Pulleys	Eksenel Bağlantı Axial Mounting
22	1	WDPK Paralel Kit Kutusu / Parallel Kit Box	
23	1	Kaplin / Coupling	
24	1	WDAK Eksenel Kit / Axial Kit	

Bakım / Maintenance


- İlk yağlama üretim sırasında yapılır.

Basic lubrication is done in-factory before shipment.

- Vidalı milin uçlarını yataklayan rulmanlar, normal çalışma koşullarında tekrardan yağlama gerektirmez.

Bearings of the ball screw have been lubricated for life and will not require in-service lubrication under normal operating conditions.

- Lineer aktüatörün yağlaması için gövdenin üzerinde yağlama portu bulunmaktadır.

The profile of the linear actuator has port on the top side for access to the lube on the ball nut.

- Tabloda Tanımlanan hareket mesafesi tamamlanırsa veya 400 çalışma saatinin hangisine önce ulaşırsa tekrar yağlama yapılmalıdır. 2 yıl sonunda hareket mesafesi ve çalışma saati değerlerine ulaşılmaya bile tekrar yağlanmalıdır.

Re-lubrication should be carried out if the defined travel distance is completed or 400 operating hours are reached first. At the end of 2 years, it must be re-lubricated even if the travel distance and working hours are not reached.

- Yağlama için;

lineer aktüatörü sıfır strok pozisyonuna getirin. yağlama portunda bulunan setskuru çıkartın tabloda belirtilen miktarda yağlama yapın ve setskuru yerine takın yağlamadan sonra lineer aktüatörü, strok mesafesi boyunca en az üç kez hareket ettirin.

Bu esnada hareket hızı 10 mm/s değerini aşmamalıdır.

For lubrication; set linear actuator to zero stroke position.

Remove the grubs in the lubrication port lubricate the amount indicated in the table and replace the glue after lubrication, move the linear actuator at least three times along the stroke distance. the travel speed must not exceed 10 mm / s.

- Lineer aktüatörler sadece uygun gres ile yağlanmalıdır.

Linear actuators must be lubricated with suitable grease.

- Lityum içerikli gres yağlar kullanılmalıdır.

Lithium soap grease should be used.

- Dikkat: grafit ya da MoS içeren gresler tercih etmeyiniz!

Caution: Do not use grease containing graphite or MoS!

- Yağlama miktarları normal çalışma koşullarına göre tabloda verilmiştir.

Lubrication quantity is provided in table by normal operating conditions.

Normal Çalışma Koşulları / Normal Working Conditions

Ortam Sıcaklığı / Ambient Temperature	°C	10 ~ 40
Çalışma Hızı / Speed	m/s	≤ 0,4
Vidalı Mil Dönme Hızı /Screw Rotation Speed	rev/min	2500
Yük / Load	N	≤ 0,2 P
Strok / Stroke	mm	> 60

Yağlama / Lubrication

Aktüatör Modeli / Actuator Model		WGCE - 032	WGCE - 040	WGCE - 063
Yağlama Periyodu / Lubrication Period	km	250	400	600
	h	400	400	400
Yağlama Miktarı / Lubricate Dose	cm ³	0,6	1,3	2,5