

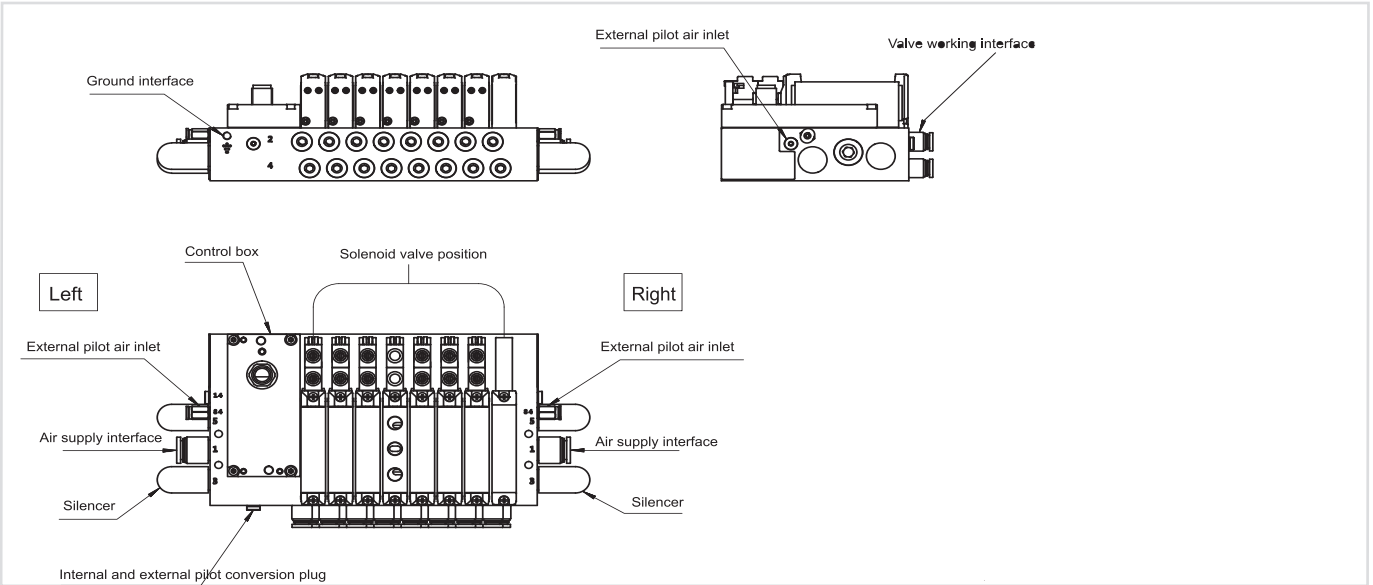
WINMAN WGVU Serisi Haberleşmeli Valfleri / WINMAN WGVU Series Communication Valves

Özellikler / Features



- 1, Optional IO-Link interface, Sub-D multi-pin interface.
- 2, EtherCAT, ProfiNet/
- 3, Bottom connection and half-pipe valve options with up to 24 valve positions.
- 4, Multiple pressure partitions possible.
- 5, Protection class IP65.
- 6, inside or outside pilot air source in the same air circuit board by using long and short plugs.
- 7, Hand control operation mode, push button with lock.
- 8, Change electrical control box for different electrical connections.
- 9, Built-in energy management module and complete protection circuit.
- 10, IO-link with troubleshooting function.

Montaj Şeması / Assembly Diagram



Komple Valf Adası Sipariş Kodu / Ordering Code

WGVT — S 14 — 4 — Z — Q10 — U — Q6S — S25

Valve type
S : Half-pipe valve
M : Bottom-connected valve

Valve width
10 : 10mm
14 : 14mm
18 : 18mm

Valve positions
4 : 4 valve positions
5 : 5 valve positions
6 : 6 valve positions
7 : 7 valve positions
8 : 8 valve positions
9 : 9 valve positions
10 : 10 valve positions
12 : 12 valve positions
16 : 16 valve positions
20 : 20 valve positions
24 : 24 valve positions

Blank : Inner Pilot
Z : Outer Pilot

Air supply interface
Blank : No connector installed
Q6 : Quick Coupler 6mm
Q8 : Quick Coupler 8mm
Q10 : Quick Coupler 10mm
Q12 : Quick Coupler 12mm
Q16 : Quick Coupler 16mm
Remark:
Q6、Q8 Suitable for valve width 10mm
Q10、Q12 Suitable for valve width 14mm
Q12、Q16 Suitable for valve width 18mm

Blank : Straight plug
A : L-shaped elbow

Blank : Both sides mounting
L : Left side mounting
R : Right side mounting

Blank : Left and right side mounting
L : Left side mounting
R : Right side mounting

Blank : No muffler
U : Muffler

Valve interface (installed by valve position)
Blank : No connector installed
Q4S : Quick Coupler 4mm
Q6S : Quick Coupler 6mm
Q8S : Quick Coupler 8mm
Remark:
Q4、Q6 Suitable for valve width 10mm
Q6、Q8 Suitable for valve width 14mm
Q6、Q8、Q10 Suitable for valve width 18mm

Blank : Left and right side mounting
L : Left side mounting
R : Right side mounting

Blank : No muffler
U : Muffler

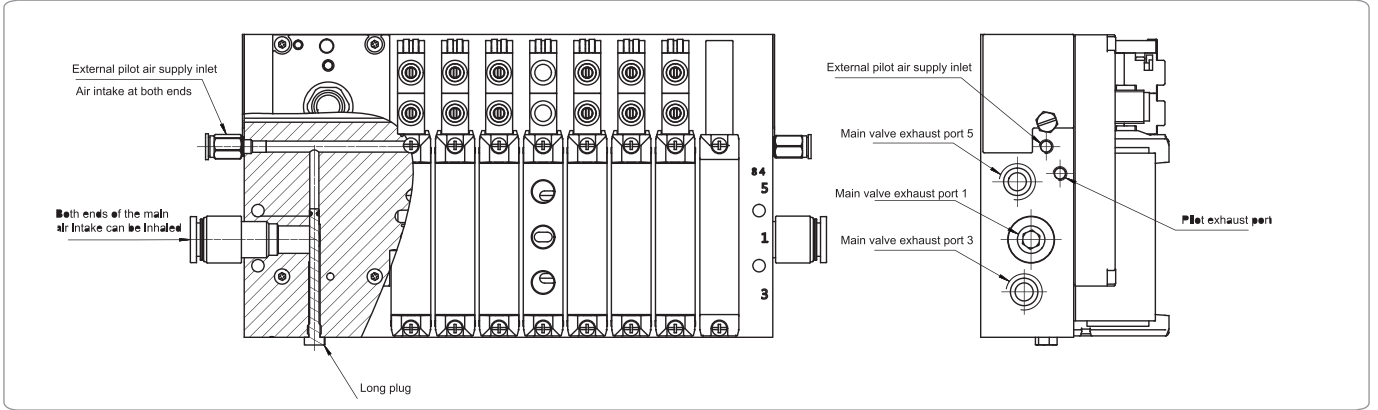
Communication Protocol
S25:Sub-D 25
L:IO-Link
CO:CANopen
EC:EtherCAT
EP:EtherNet
PN:ProfiNet
BA: CIEBS

Function of the valve :
R : Two two positions three normally closed type (gas reset)
H : Two-position three-way opening and closing type
U : Two two positions three normally open type (gas reset)
M : Two-position five-way single electric control (gas reset)
B : Two-position five-way double electric control
C : Three-position five-way middle seal type
P : Three-position five-way medium pressure type
E : Three-position five-way center drain type
T:Vacant blind plate
X:Air source plate

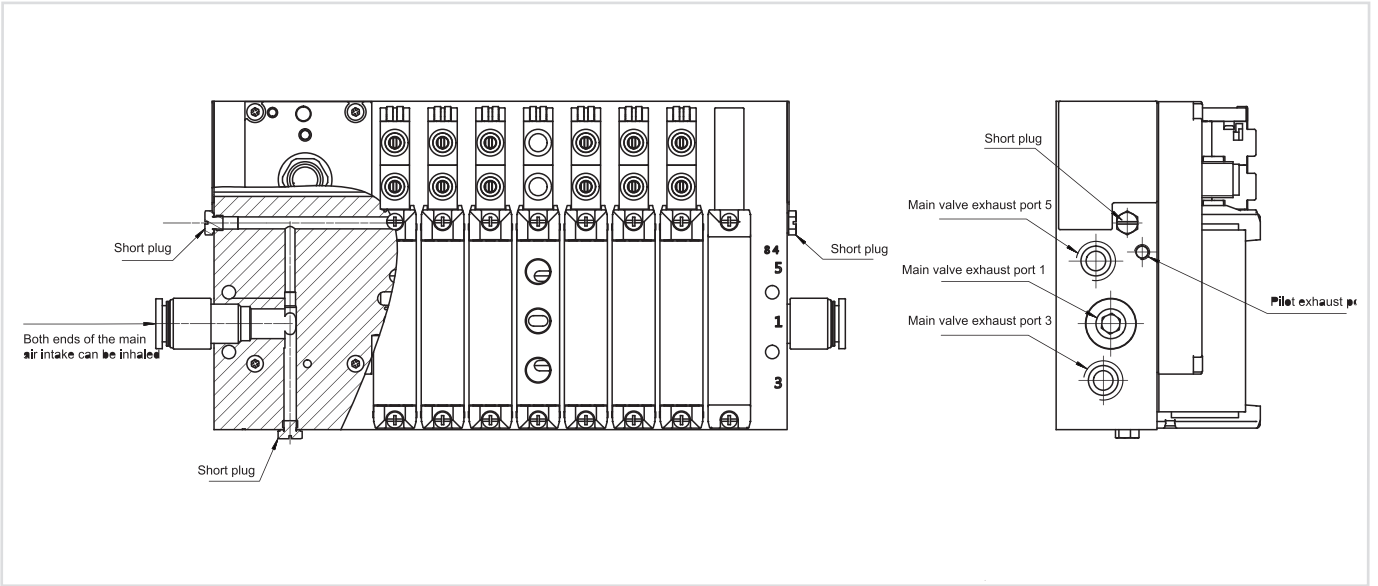
Number of valves
2 : 2
3 : 3
.....
24 : 24

WINMAN WGVU Serisi Haberleşme Valfleri / WINMAN WGVU Series Communication Valves

Örnek/Example

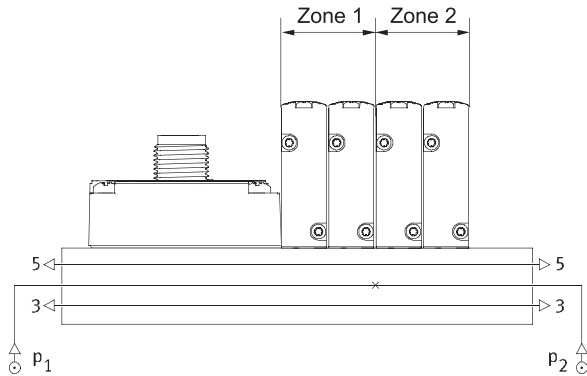


Dahili Pilot/Internal pilot



Basınç bölgeleri oluşturmaya yönelik talimatlar / Instructions for creating pressure zones

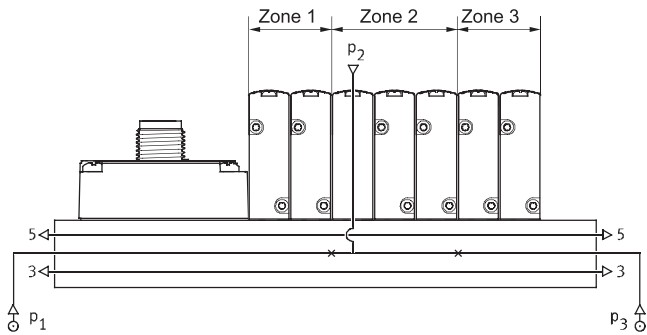
- 1, The inlet and outlet are realized by entering the manifold and the air source plate.
- 2, The position and channel isolation of the air source plate can be freely selected.
- 3, Internal intake passages isolated between manifolds by suitable passages create pressure zones.
- 4, Pressure zone isolation is only applicable to channel 1



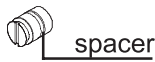
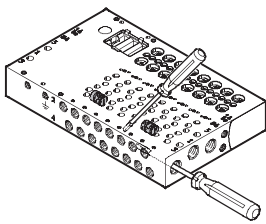
When using one isolator,
two pressure zones can be created.

WINMAN WGVU Serisi Haberleşme Valfleri / WINMAN WGVU Series Communication Valves

Basınç bölgeleri oluşturmaya yönelik talimatlar / Instructions for creating pressure zones



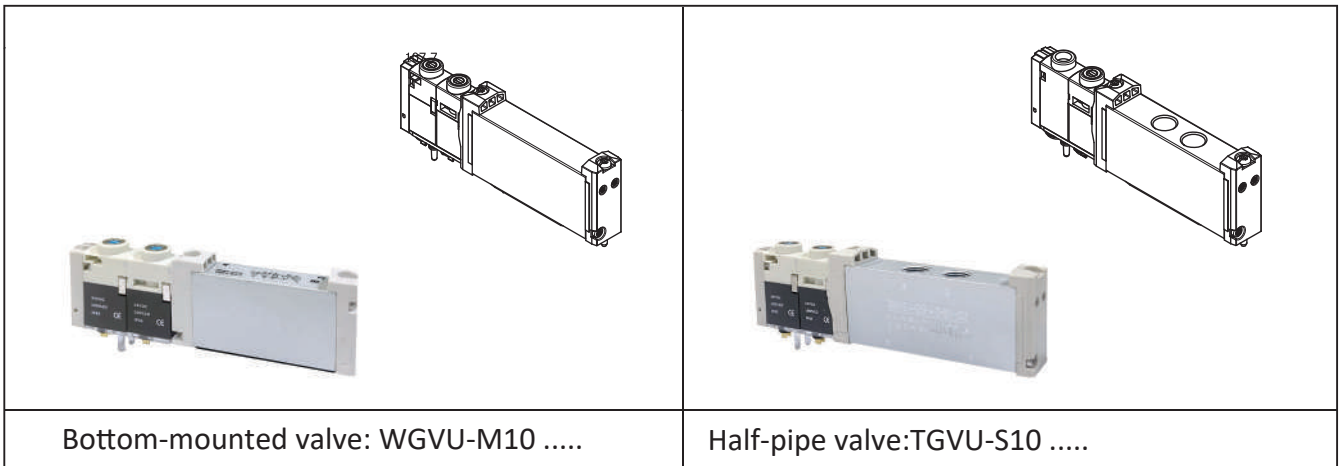
When two spacers are used, three pressure zones can be created and the air supply plate needs to occupy one valve position.



The WGVU can create multiple pressure zones by installing the spacer VABD, which is installed in the manifold channel 1 by means of a screwdriver.

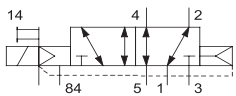
Solenoid Valve for Valve Island

10mm bottom-connected and half-tube type valve plate

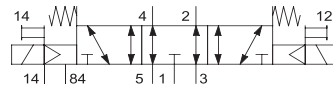


Valve function

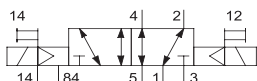
25M (two-position five-way single electric control, gas reset)



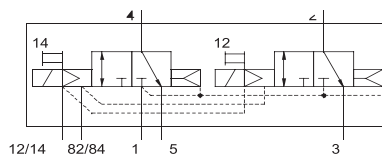
35E (three-position five-way middle-) drain type



25B (Two-position five-way double electric control)

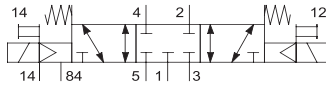


23R (Two-position three-way double normally closed, air reset)

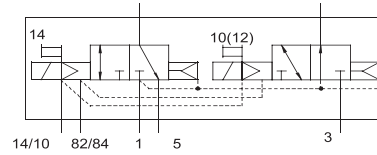


WINMAN WGVU Serisi Haberleşme Valfleri/ WINMAN WGVU Series Communication Valves
Valve function

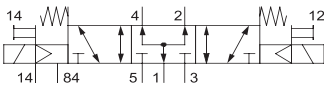
35C(Three–position five–way middle seal type)



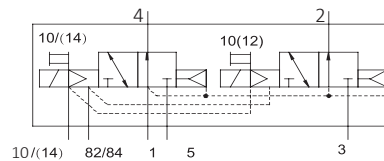
23U(Two–position three–way double normally open air reset)



35P(Three–position five–way medium pressure type)



23H(Two–position three–way, one normally open, one normally closed air reset)


Specification

Specification/ item	Valve width	Function	Steady state	Working medium	Initial position	Pilot air supply	Rated flow L/min	Port 1、 3、 5	Port 2、 4
WGVU-M10-23R	10mm	2 position 3 way	Monostable	Compressed air conforms to ISO8573	Normally closed	External pilot	520	G1/4 on the manifold	G1/8 on the manifold
WGVU-M10-23U					Normally open		520		
WGVU-M10-23H					1 Normally open 1 Normally closed		520		
WGVU-M10-25M		2 position 5 way	Bistable		—		530		
WGVU-M 10-25B					—		530		
WGVU-M 10-35C					3 position 5 way		Medium seal		
WGVU-M10-35P		Medium pressure	530						
WGVU-M 10-35E		Medium drain	480						
WGVU-S10-23R		10mm	2 position 3 way		Monostable		Compressed air conforms to ISO8573		
WGVU-S10-23U	Normally open			520					
WGVU-S10-23H	1 Normally open 1 Normally closed			520					
WGVU-S10-25M	2 position 5 way		Bistable	—	530				
WGVU-S10-25B				—	530				
WGVU-S10-35C				3 position 5 way	Monostable	Medium seal		500	
WGVU-S10-35P	Medium pressure		530						
WGVU-S10-35E	Medium drain		480						

Note: Specification 10 valve island using external pilot must meet the following conditions, otherwise it can not be driven, the main valve using negative pressure, external pilot air pressure 0.25-0.8Mpa: main valve using positive pressure, external pilot pressure main valve pressure.

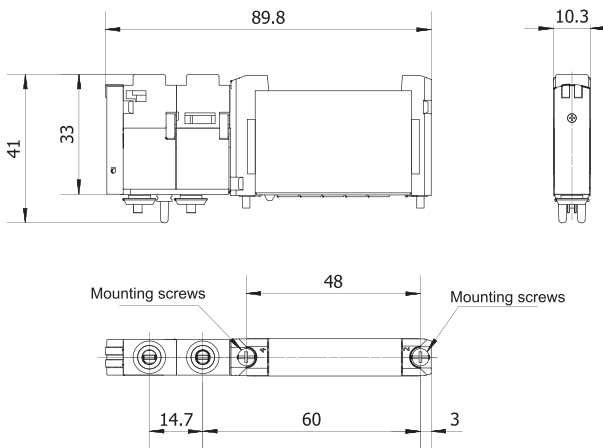
WINMAN WGVU Serisi Haberleşme Valfleri / WINMAN WGVU Series Communication Valves
Specification

Specification/ item	Ambient temperature	Medium temperature	Operating voltage V DC	Power consumption W	Fastest operating frequency Times/second	Working pressure during internal pilot Mpa	Working pressure during external pilot Mpa
WGVU-M10-23R	-5~60	-5~60	24±10%	1	10	0.15~0.8	0.15~0.8
WGVU-M10-23U					10	0.15~0.8	0.15~0.8
WGVU-M10-23H					10	0.15~0.8	0.15~0.8
WGVU-M10-25M					15	0.25~0.8	-0.9~0.8
WGVU-M10-25B					15	0.15~0.8	-0.9~0.8
WGVU-M10-35C					10	0.2~0.8	-0.9~0.8
WGVU-M10-35P					10	0.2~0.8	-0.9~0.8
WGVU-M10-35E					10	0.2~0.8	-0.9~0.8
WGVU-S10-23R	-5~60	-5~60	24±10%	1	10	0.15~0.8	0.15~0.8
WGVU-S10-23U					10	0.15~0.8	0.15~0.8
WGVU-S10-23H					10	0.15~0.8	0.15~0.8
WGVU-S10-25M					15	0.25~0.8	-0.9~0.8
WGVU-S10-25B					15	0.15~0.8	-0.9~0.8
WGVU-S10-35C					10	0.2~0.8	-0.9~0.8
WGVU-S10-35P					10	0.2~0.8	-0.9~0.8
WGVU-S10-35E					10	0.2~0.8	-0.9~0.8

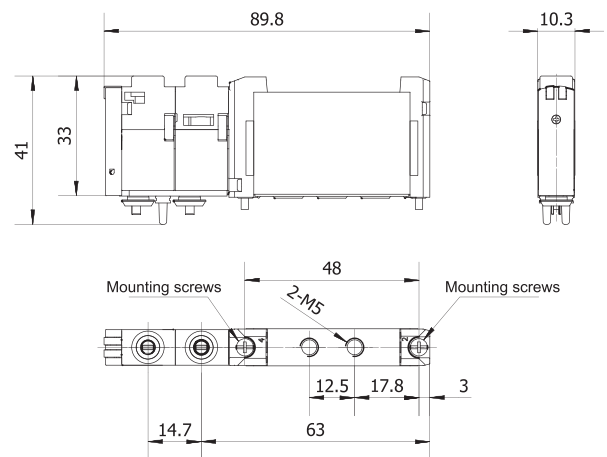
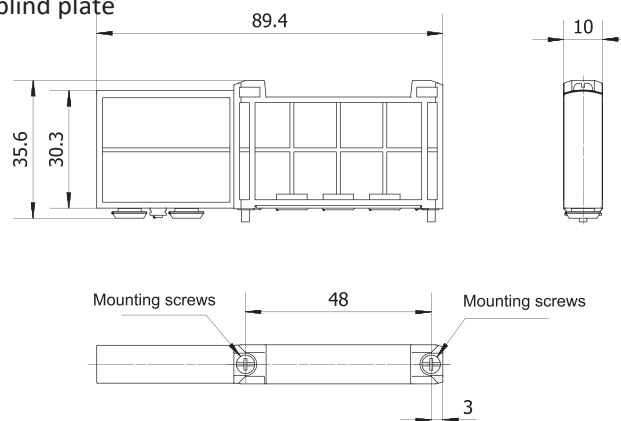
Note: Specification 10 valve island using external pilot must meet the following conditions, otherwise it can not be driven, the main valve using negative pressure, external pilot air pressure 0.25-0.8Mpa: main valve using positive pressure, external pilot pressure main valve pressure.

Figure Dimension

WGVU-M14 Bottom-mounted valve



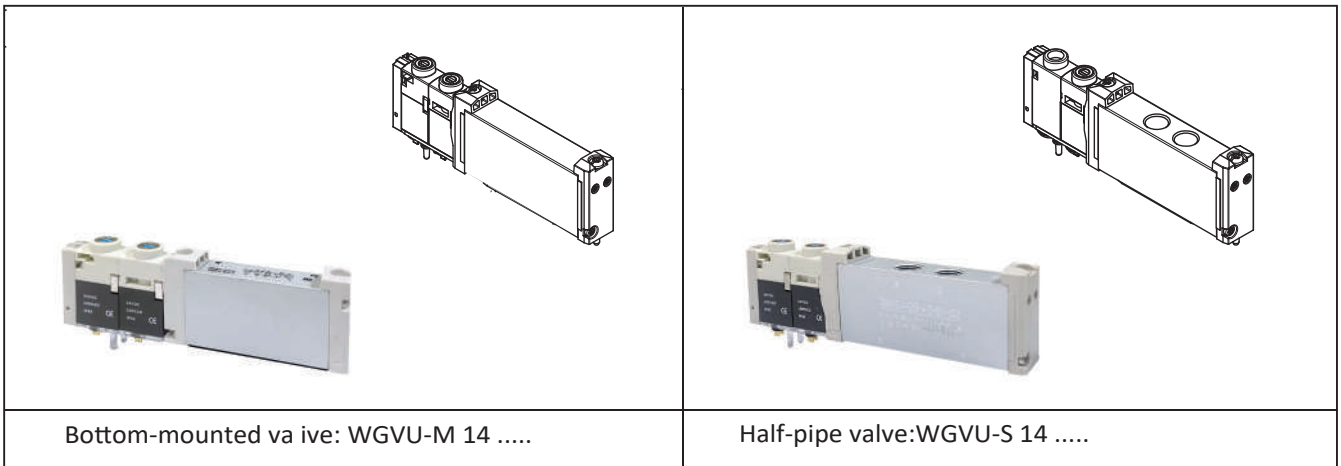
WGVU-S14 Half-pipe valve


 TGVU-M 10-T Bottom-connected blind plate
 TGVU-S10-T Half-pipe blind plate


WINMAN WGVU Serisi Haberleşme Valfleri / WINMAN WGVU Series Communication Valves

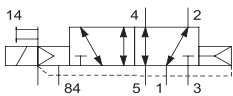
Solenoid Valve far Valve Island

14mm

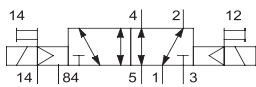


Valve function

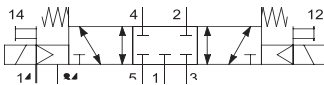
25M (two-position five-way single electric control gas reset)



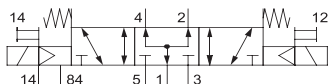
25B (Two-position five-way double electric control)



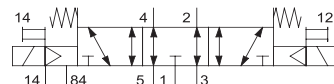
35C (Three-position five-way middle seal type)



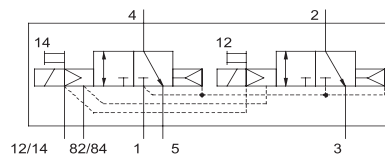
35P (Three-position five-way medium pressure type)



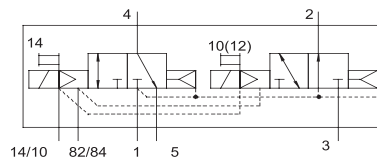
35E (three-position five-way middle-drain type)



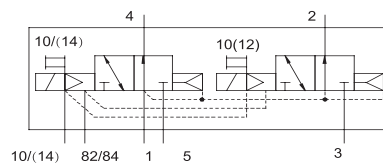
23R (Two-position three-way double normally closed, air reset)



23U (Two-position three-way double normally open air reset)



23H (Two-position three-way, one normally open, one normally closed air reset)



WINMAN WGVU Serisi Haberleşme Valfleri / WINMAN WGVU Series Communication Valves
Specification

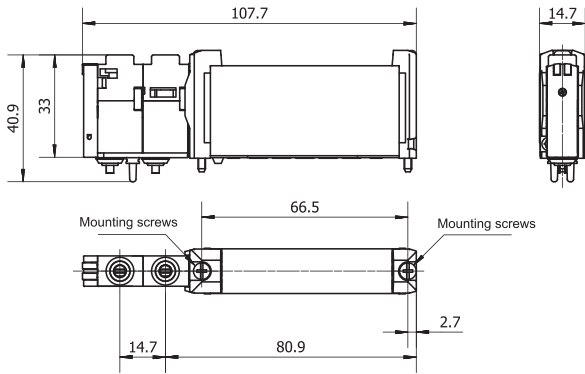
Specification/ item	Valve width	Function	Steady state	Working medium	Initial position	Pilot air supply	Rated flow L/min	Port 1、3、5	Port 2、4
WGVU-M 14-23R	14mm	2 position 3 way	Monostable	Compressed air conforms to ISO8573	Normally closed	External pilot	520	G1/4 on the manifold	G1/8 on the manifold
WGVU-M 14-23U					Normally open		520		
WGVU-M 14-23H					1 Normally open 1 Normally closed		520		
WGVU-M 14-25M					—		530		
WGVU-M14-25B		2 position 5 way	Bistable		—		530		
WGVU-M 14-35C					Medium seal		500		
WGVU-M 14-35P		3 position 5 way	Monostable		Medium pressure		530		
WGVU-M 14-35E					Medium drain		480		
WGVU-S14-23R	14mm	2 position 3 way	Monostable	Compressed air conforms to ISO8573	Normally closed	External pilot	520	G1/4 on the manifold	G1/8 on the valve
WGVU-S14-23U					Normally open		520		
WGVU-S14-23H					1 Normally open 1 Normally closed		520		
WGVU-S14-25M					—		530		
WGVU-S14-25B		2 position 5 way	Bistable		—		530		
WGVU-S14-35C					Medium seal		500		
WGVU-S14-35P		3 position 5 way	Monostable		Medium pressure		530		
WGVU-S14-35E					Medium drain		480		

Specification/ item	Ambient temperature	Medium temperature	Operating voltage V DC	Power consumption W	Fastest operating frequency Times/second	Working pressure during internal pilot Mpa	Working pressure during external pilot Mpa
WGVU-M 14-23R	-5~60	-5~60	24±10%	1	10	0.15~0.8	0.15~0.8
WGVU-M 14-23U					10	0.15~0.8	0.15~0.8
WGVU-M 14-23H					10	0.15~0.8	0.15~0.8
WGVU-M 14-25M					15	0.15~0.8	-0.9~0.8
WGVU-M 14-25B					15	0.15~0.8	-0.9~0.8
WGVU-M 14-35C					10	0.2~0.8	-0.9~0.8
WGVU-M14-35P					10	0.2~0.8	-0.9~0.8
WGVU-M 14-35E					10	0.2~0.8	-0.9~0.8
WGVU-S14-23R	-5~60	-5~60	24±10%	1	10	0.15~0.8	0.15~0.8
WGVU-S14-23U					10	0.15~0.8	0.15~0.8
WGVU-S14-23H					10	0.15~0.8	0.15~0.8
WGVU-S14-25M					15	0.15~0.8	-0.9~0.8
WGVU-S14-25B					15	0.15~0.8	-0.9~0.8
WGVU-S14-35C					10	0.2~0.8	-0.9~0.8
WGVU-S14-35P					10	0.2~0.8	-0.9~0.8
WGVU-S14-35E					10	0.2~0.8	-0.9~0.8

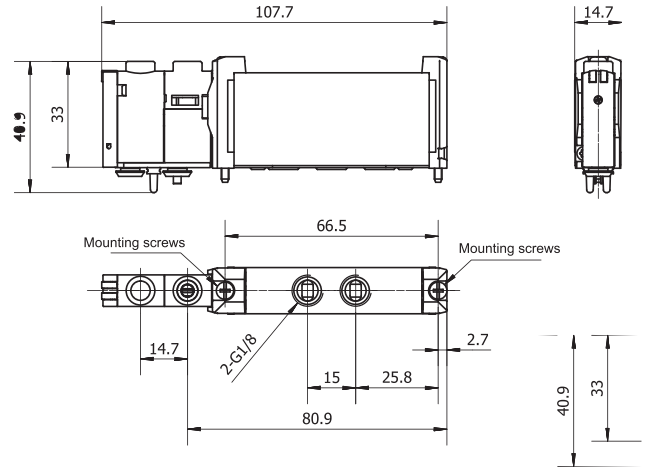
Note: Specification 14 valve island using external pilot must meet the following conditions, otherwise it can not be driven, the main valve using negative pressure, external pilot air pressure $\geq 0.2\text{Mpa}$: main valve using positive pressure, external pilot pressure \geq main valve pressure.

Figure Dimension

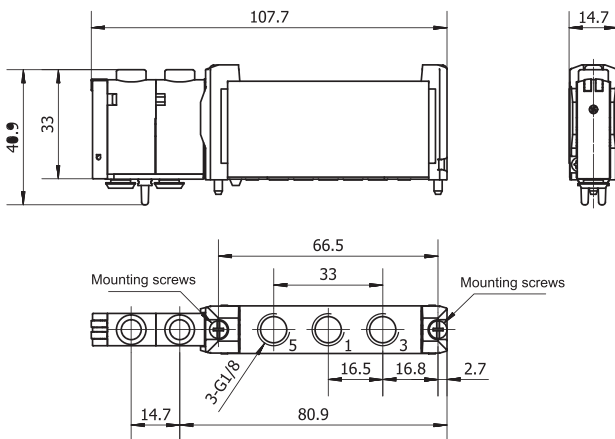
WGVU-M14 Bottom-mounted valve



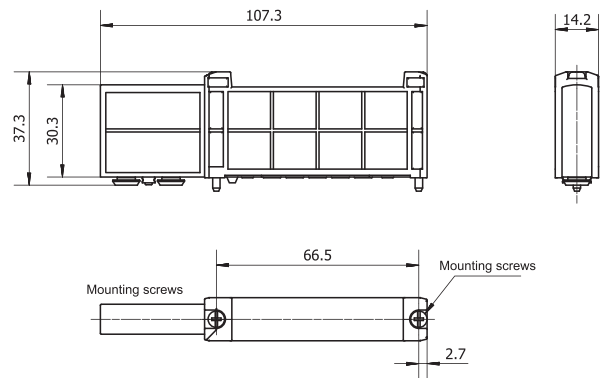
WGVU-S14 Half-pipe valve



**WGVU-M14-X Bottom-connected air source plate
WGVU-S14-X half-pipe air source plate**



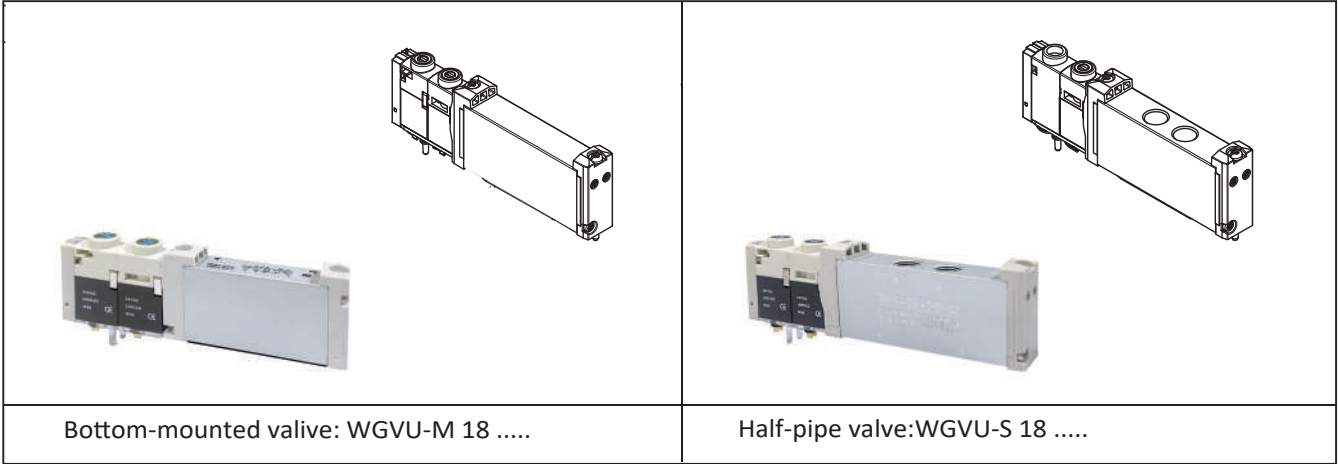
**WGVU-M14-T Bottom-connected blind plate
WGVU-S14-T Half-pipe blind plate**



WINMAN WGVU Serisi Haberleşme Valfleri/WINMAN WGVU Series Communication Valves

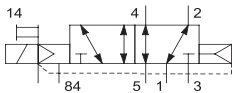
Solenoid Valve far Valve Island

18mm

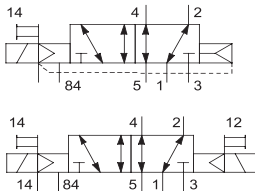


Valve function

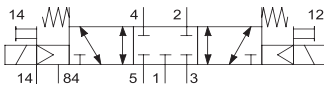
25M(two-position five-way single electric control, gas reset)



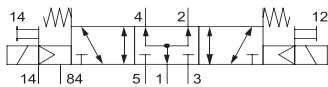
25B(Two-position five-way double electric control)



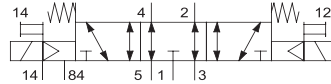
35C(Three-position five-way middle seal type)



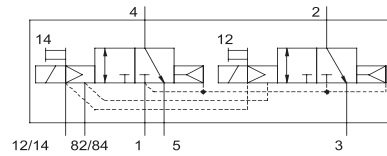
35P(Three-position five-way medium pressure type)



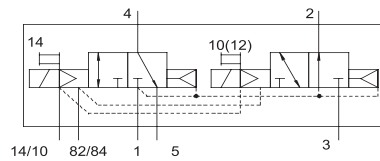
35E(three-position five-way middle-drain type)



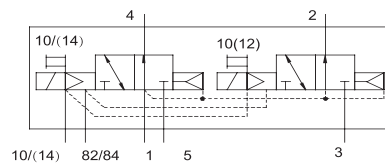
23R(Two-position three-way double normally closed, air reset)



23U(Two-position three-way double normally open air reset)



23H(Two-position three-way, one normally open, one normally closed air reset)



WINMAN WGVU Serisi Haberleşme Valfleri/WINMAN WGVU Series Communication Valves

Specification

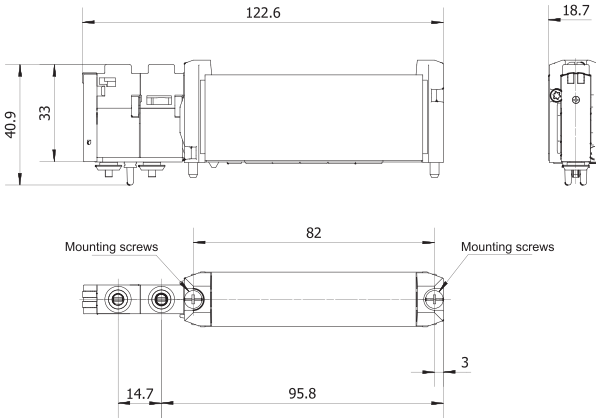
Specification/ item	Valve width	Function	Steady state	Working medium	Initial position	Pilot air supply	Rated flow L/min	Port 1、 3 、 5	Port 2、 4
WGVU-M18-23R	18mm	2 position 3 way	Monostable	Compressed air conforms to ISO8573	Normally closed	External pilot	520	G1/4 on the manifold	G1/8 on the manifold
WGVU-M18-23U					Normally open		520		
WGVU-M18-23H					1 Normally open 1 Normally closed		520		
WGVU-M18-25M		2 position 5 way	Bistable		—		530		
WGVU-M 18-25B					—		530		
WGVU-M 18-35C		3 position 5 way	Monostable		Medium seal		500		
WGVU-M18-35P					Medium pressure		530		
WGVU-M 18-35E					Medium drain		480		
WGVU-S18-23R		18mm	2 position 3 way		Monostable		Compressed air conforms to ISO8573		
WGVU-818-23U	Normally open			520					
WGVU-S18-23H	1 Normally open 1 Normally closed			520					
WGVU-S18-25M	2 position 5 way		Bistable	—	530				
WGVU-S18-25B				—	530				
WGVU-S18-35C	3 position 5 way		Monostable	Medium seal	500				
WGVU-S18-35P				Medium pressure	530				
WGVU-S18-35E				Medium drain	480				

Specification/ item	Ambient temperature	Medium temperature	Operating voltage V DC	Power consumption W	Fastest operating frequency Times/second	Working pressure during internal pilot Mpa	Working pressure during external pilot Mpa
WGVU-M18-23R	-5~60	-5~60	24±10%	1	10	0.15~0.8	0.15~0.8
WGVU-M18-23U					10	0.15~0.8	0.15~0.8
WGVU-M18-23H					10	0.15~0.8	0.15~0.8
WGVU-M18-25M					15	0.15~0.8	-0.9~0.8
WGVU-M18-25B					15	0.15~0.8	-0.9~0.8
WGVU-M18-35C					10	0.2~0.8	-0.9~0.8
WGVU-M18-35P					10	0.2~0.8	-0.9~0.8
WGVU-M18-35E					10	0.2~0.8	-0.9~0.8
WGVU-S18-23R					-5~60	-5~60	24±10%
WGVU-S18-23U	10	0.15~0.8	0.15~0.8				
WGVU-S18-23H	10	0.15~0.8	0.15~0.8				
WGVU-S18-25M	15	0.15~0.8	-0.9~0.8				
WGVU-S18-25B	15	0.15~0.8	-0.9~0.8				
WGVU-S18-35C	10	0.2~0.8	-0.9~0.8				
WGVU-S18-35P	10	0.2~0.8	-0.9~0.8				
WGVU-S18-35E	10	0.2~0.8	-0.9~0.8				

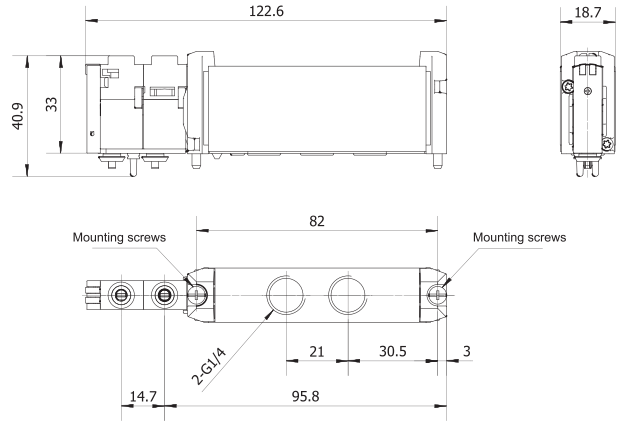
Note: Specification 18 valve island using external pilot must meet the following conditions, otherwise it can not be driven, the main valve using negative pressure, external pilot air pressure $\geq 0.2\text{Mpa}$: main valve using positive pressure, external pilot pressure \geq main valve pressure.

Figure Dimension

WGVU-M18 Bottom-mounted valve

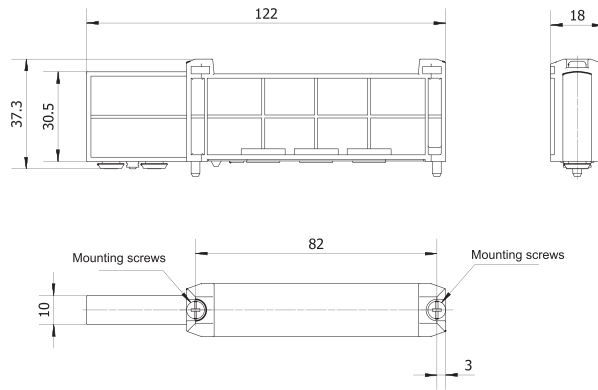


WGVU-S18 Half-pipe valve



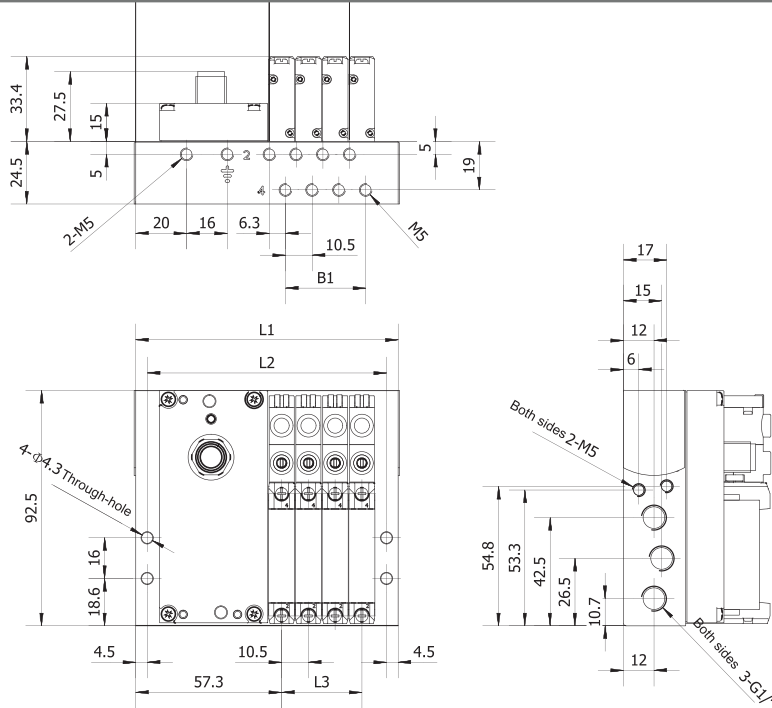
WGVU-M18-T Bottom-connected blind plate

WGVU-S18-T Half-pipe blind plate



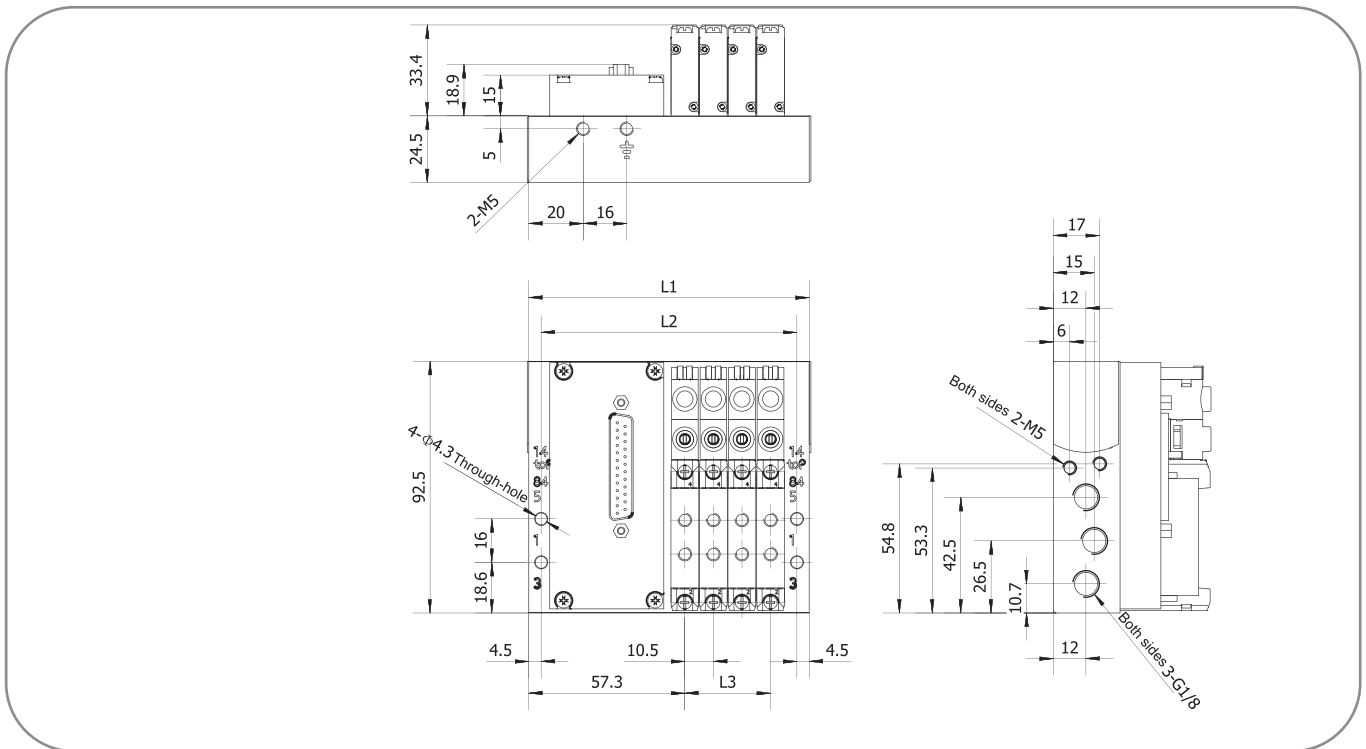
WINMAN WGVU Serisi Haberleşme Valfleri/WINMAN WGVU Series Communication Valves

Figure Dimension/Bottom connection manifold (with valve)WGVA-M10



WINMAN WGVU Serisi Haberleşme Valfleri/ WINMAN WGVU Series Communication Valves
Figure Dimension

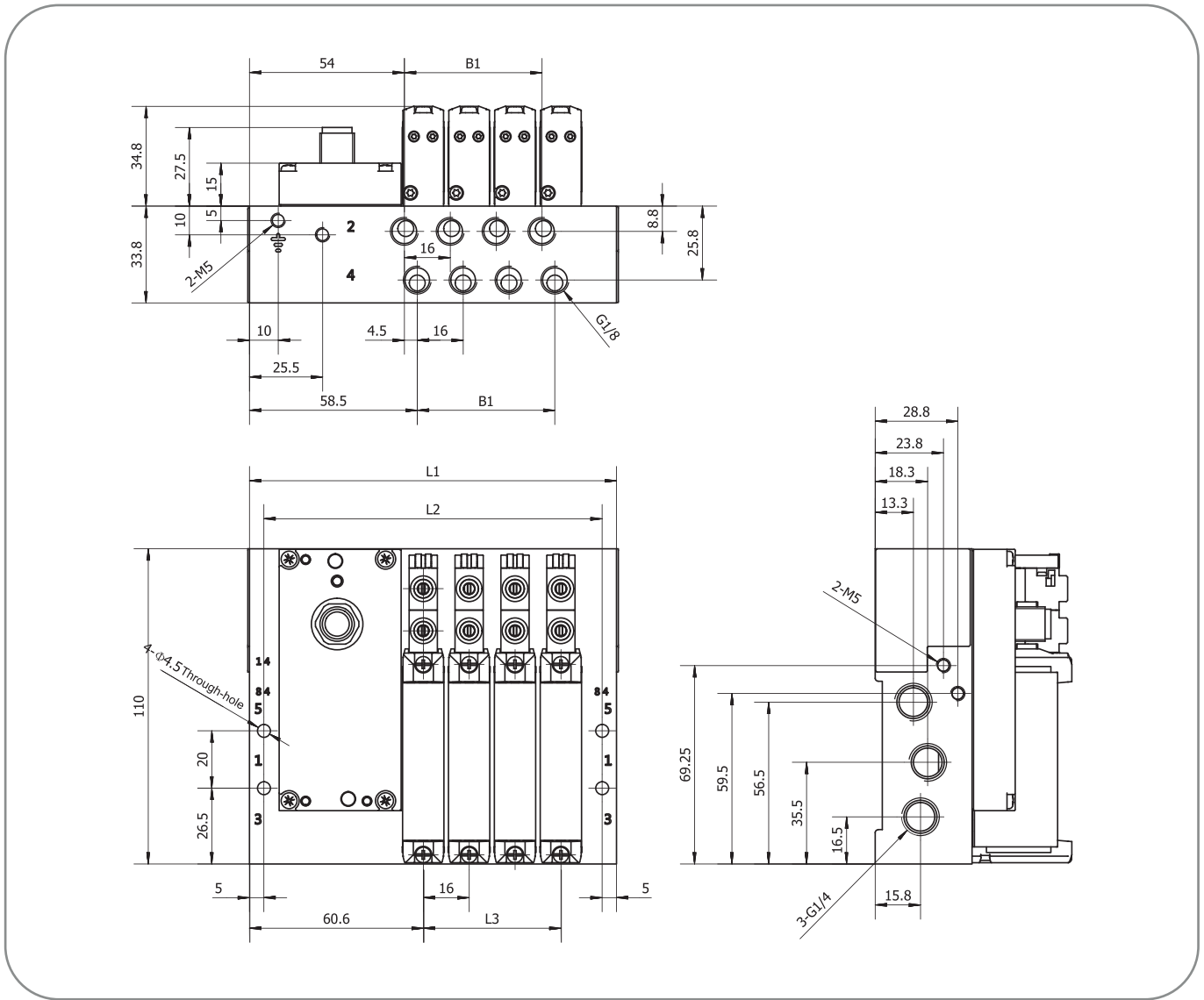
Model	Number of Valves	L1	L2	L3	B1
WGVA-M10	4	128	118	48	48
	5	144	134	64	64
	6	160	150	80	80
	7	176	166	96	96
	8	192	182	112	112
	9	208	198	128	128
	10	224	214	144	144
	12	256	246	176	176
	16	320	310	240	240
	20	384	374	304	304
24	448	438	368	368	

Figure Dimension/Half-pipe manifold (with valve) WGVA-S10 Dimensions


Model	Number of Valves	L1	L2	L3
WGVA-S10	4	128	118	48
	5	144	134	64
	6	160	150	80
	7	176	166	96
	8	192	182	112
	9	208	198	128
	10	224	214	144
	12	256	246	176
	16	320	310	240
	20	384	374	304
24	448	438	368	

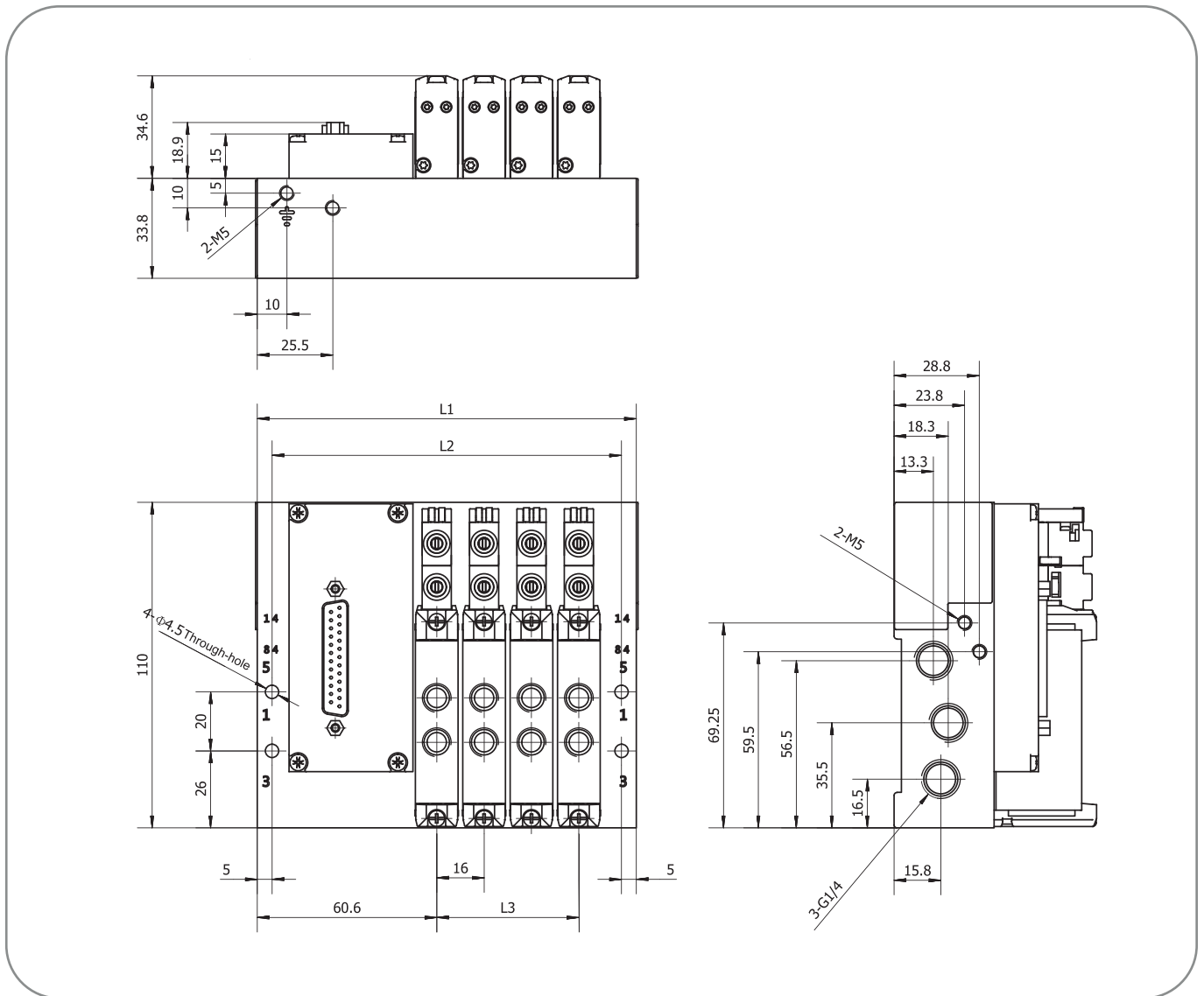
WINMAN WGVU Serisi Haberleşme Valfleri/WINMAN WGVU Series Communication Valves

Figure Dimension/Bottom connection manifold (with valve) WGVA-M14



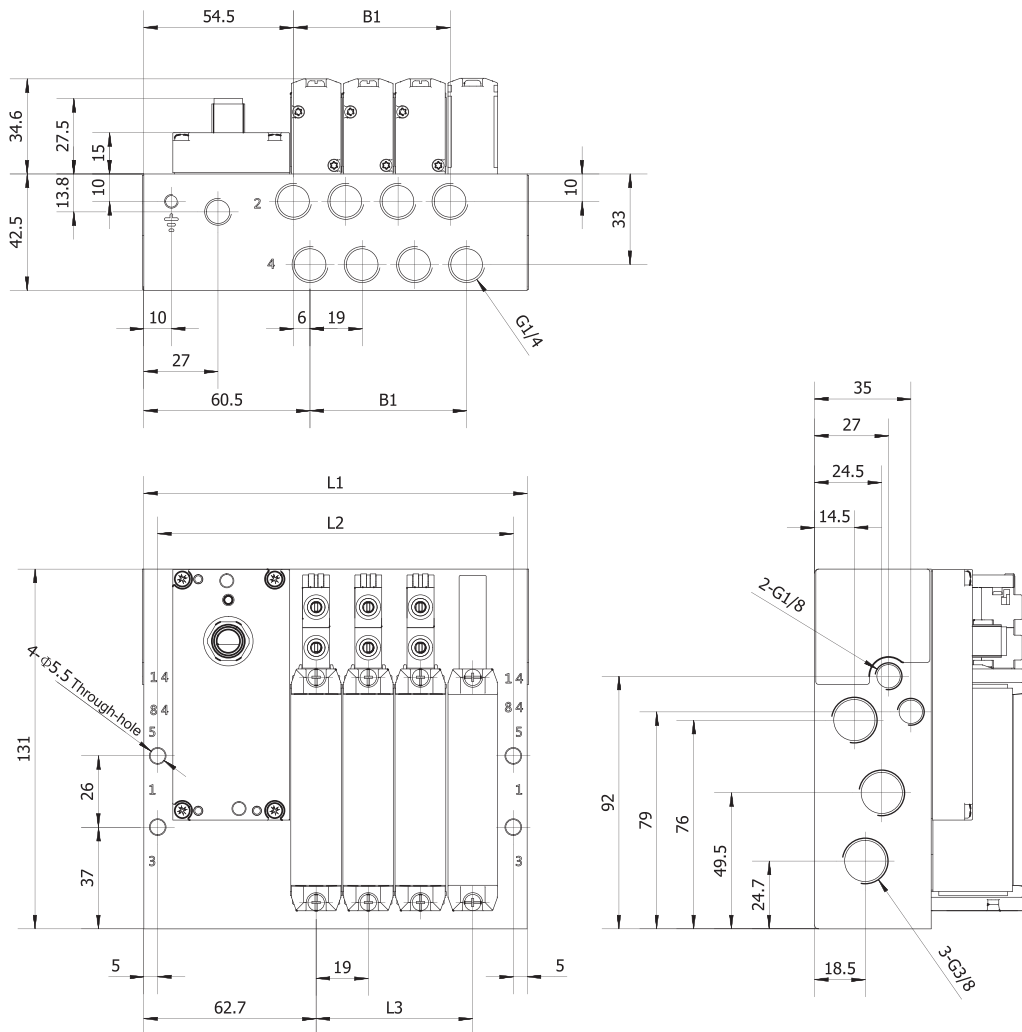
Model	Number of Valves	L1	L2	L3	B1
WGVA-M14	4	128	118	48	48
	5	144	134	64	64
	6	160	150	80	80
	7	176	166	96	96
	8	192	182	112	112
	9	208	198	128	128
	10	224	214	144	144
	12	256	246	176	176
	16	320	310	240	240
	20	384	374	304	304
24	448	438	368	368	

WINMAN WGVU Serisi Haberleşme Valfleri / WINMAN WGVU Series Communication Valves

Figure Dimension/Half-pipe manifold (with valve)WGVA-S14 Dimensions


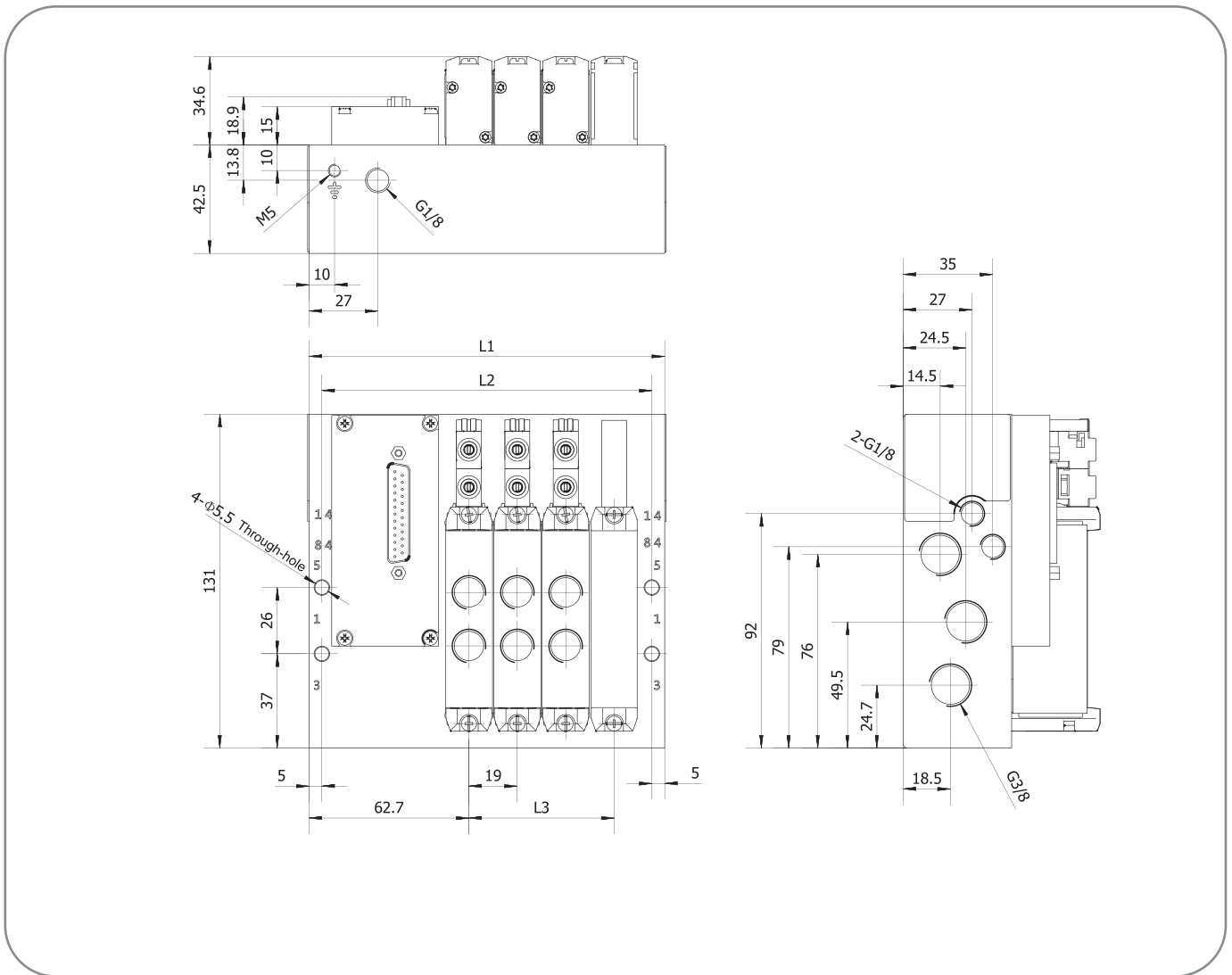
Model	Number of Valves	L1	L2	L3
WGVA-S14	4	128	118	48
	5	144	134	64
	6	160	150	80
	7	176	166	96
	8	192	182	112
	9	208	198	128
	10	224	214	144
	12	256	246	176
	16	320	310	240
	20	384	374	304
	24	448	438	368

WINMAN WGVU Serisi Haberleşme Valfleri / WINMAN WGVU Series Communication Valves

Figure Dimension/Bottom-connected manifold (with valve plate) WGVA-M18 Dimensions


Model	Number of Valves	L1	L2	L3	B1
WGVA-M18	4	128	118	48	48
	5	144	134	64	64
	6	160	150	80	80
	7	176	166	96	96
	8	192	182	112	112
	9	208	198	128	128
	10	224	214	144	144
	12	256	246	176	176
	16	320	310	240	240
	20	384	374	304	304
	24	448	438	368	368

WINMAN WGVU Serisi Haberleşme Valfleri/WINMAN WGVU Series Communication Valves

Figure Dimension/Half-pipe manifold (with valve) WGVA-S18 Dimensions


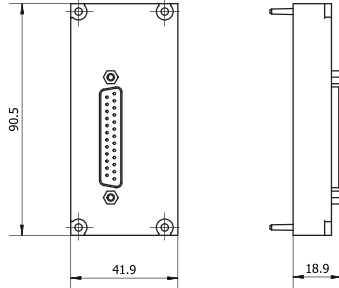
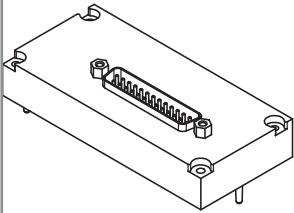
Model	Number of Valves	L1	L2	L3
WGVA-S18	4	128	118	48
	5	144	134	64
	6	160	150	80
	7	176	166	96
	8	192	182	112
	9	208	198	128
	10	224	214	144
	12	256	246	176
	16	320	310	240
	20	384	374	304
	24	448	438	368

WINMAN WGVU Serisi Haberleşme Valfleri / WINMAN WGVU Series Communication Valves

Multi-pin electrical control box

M1-25-SUB

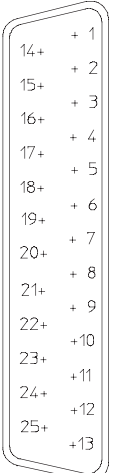
Each pin on a multi-pin plug can drive one solenoid, 25 pins can drive up to 24 solenoids, It means that using all dual solenoids can configure up to 12 valve positions, and using all single solenoids can configure up to 24 valve positions (A dual solenoid valve occupies one valve position and two pins on the multi-pin plug).



Specification	
Model	M1-25-SUB
Number of Pin	25
Electrical connections	Sub-D plug
Max number of valve positions	24
Protection class, complies with EN60529 standard	IP67

Pin assignment - Sub-D plug, 25-pin

	M1-25 (V20)									
	Pin	12x dual solenoid		8x dual solenoid 8x single solenoid		4x dual solenoid 16x single solenoid		24x single solenoid		
	1	VP0	14	VP0	14	VP0	14	VP0	14	
	2	VP0	12	VP0	12	VP0	12	VP23	14	
	3	VP1	14	VP1	14	VP1	14	VP1	14	
	4	VP1	12	VP1	12	VP1	12	VP22	14	
	5	VP2	14	VP2	14	VP2	14	VP2	14	
	6	VP2	12	VP2	12	VP2	12	VP21	14	
	7	VP3	14	VP3	14	VP3	14	VP3	14	
	8	VP3	12	VP3	12	VP3	12	VP20	14	
	9	VP4	14	VP4	14	VP4	14	VP4	14	
	10	VP4	12	VP4	12	VP19	14	VP19	14	
	11	VP5	14	VP5	14	VP5	14	VP5	14	
	12	VP5	12	VP5	12	VP18	14	VP18	14	
	13	VP6	14	VP6	14	VP6	14	VP6	14	
	14	VP6	12	VP6	12	VP17	14	VP17	14	
	15	VP7	14	VP7	14	VP7	14	VP7	14	
	16	VP7	12	VP7	12	VP16	14	VP16	14	
	17	VP8	14	VP8	14	VP8	14	VP8	14	
	18	VP8	12	VP15	14	VP15	14	VP15	14	
	19	VP9	14	VP9	14	VP9	14	VP9	14	
	20	VP9	12	VP14	14	VP14	14	VP14	14	
	21	VP10	14	VP10	14	VP10	14	VP10	14	
	22	VP10	12	VP13	14	VP13	14	VP13	14	
	23	VP11	14	VP11	14	VP11	14	VP11	14	
	24	VP11	12	VP12	14	VP12	14	VP12	14	
	25	Com		Com		Com	Com	Com		



Notice
Gray fields mean that double solenoid valves can be used, white fields mean that only single solenoid valves can be used.

WINMAN WGVU Serisi Haberleşme Valfleri/ WINMAN WGVU Series Communication Valves

Multi-pin electrical control box

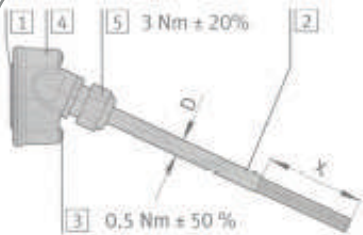
Specification



Cable Structure (mm ²)	25×0.34
Cable Diameter D (mm)	10
Min deflection radius R (mm)	125
Free length of end X (mm)	60
Protection grade	IP65
Working temperature °C	-5~80
No harmful substances	RoHS compliant
Cable material	SRPVC/FRPVC
Sheath Color	RAL7001
Specification reference	UL758-2464

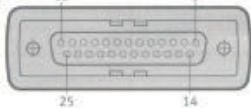
Model	Pin	Cable Length
W1WA25-K-2.5	25 Pin	2.5 m long cable
W1WA25-K-5	25 Pin	5 m long cable

Parts List

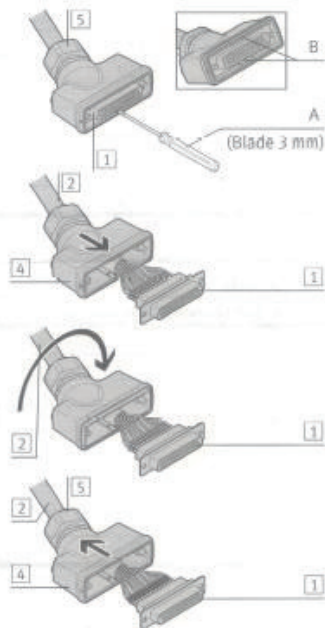


- 1 : 25 pin SUU-D female
- 2 : Cable line
- 3: Screws
- 4: Shell
- 5 : Cable lock nut

Pin configuration



Socket location change



- 5 Loosen nut 5
- Use a screwdriver to push out the female connector 1 from A and B
- Push cable 2 until female 1 leaves housing 4
- Flip the cable 2 and the female connector 180°
- Push female 1 and cable 2 into housing 4
- Push the female head into the two card slots of A and B
- Tighten the nut 5

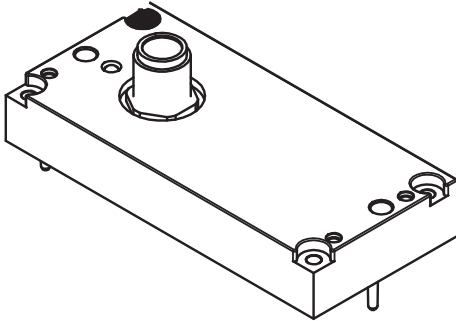
Pin configuration

Thread Color	Pin
White	1
Brown	2
Green	3
Yellow	4
Grey	5
Pink	6
Blue	7
Red	8
Black	9
Burple	10
Grey-Pink	11
Red-Blue	12
Green-White	13
Brown-Green	14
Yellow-White	15
Brown-Yellow	16
Grey-White	17
Brown-Grey	18
White-Pink	19
Brown-Pink	20
Blue-White	21
Brown-Blue	22
Red-White	23
Brown-Red	24
Black White	25

WINMAN WGVU Serisi Haberleşme Valfleri/WINMAN WGVU Series Communication Valves

IO-link electrical control box

Specification



Communication type	IO-Link
Electrical connections	M12 5 pins
Electrical connections	Sub-D
Bbaud rate COM3 [kbps]	230.4
COM2 [kbps]	38.4
Inherent power consumption, logic power PS [mA]	30
Inherent power consumption, valve power PL [mA]	30
Max solenoid coil L1-S-8-PT	16
L1-S-16-PT	32
L1-S-24-PT	48
Max number of valves L1-S-8-PT	8
L1-S-16-PT	16
L1-S-24-PT	24
Ambient temperature [°C]	-5~60
Protection class Comply with EN60529 standard	IP65

Choose the right control box from an economical point of view

LED display			
	Color	Status	Function
Status LED×1	Red Green Blue	No light	no 24V logic
		Steady green light	Data communication is abnormal
		Blinking green light	Normal operation
		Flashing red	Device failure
		The red light is always on	The 24V load voltage supply is abnormal
		Blue light is always on	One or more channels are overloaded or open
Pin Assignment IO-Link Connector			
	Pin	IO-Link corresponding name	
	1	Power PS (+24V)	
	2	Load power PL (+24V)	
	3	Power PS (0V)	
	4	Communication signal C/Q	
5	Load power PL (0V)		

WINMAN WGVU Serisi Haberleşme Valfleri/WINMAN WGVU Series Communication Valves

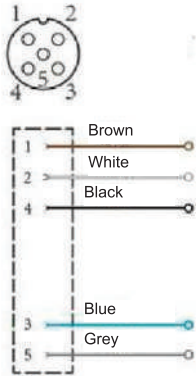
IO-link electrical control box

Specification



Electrical connections	M12 5 pins
Cable diameter D (mm)	5
Min deflection radius R (mm)	50
Rated voltage	60VAC/DC
Rated power	Max. 4A
Protection class	IP65
Operating temperature °C	-25~85
Cable material	SRPVC/FRPVC
Sheath Color	RAL7001

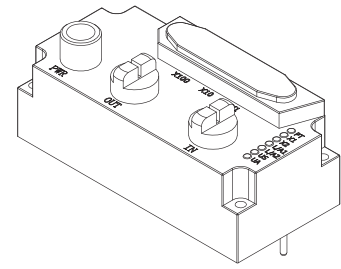
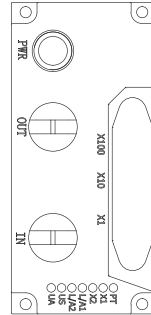
Wiring diagram



Model	Pin	Cable Length
M12-F5T-2M	5 pins	2m long cable
M12-F5T-5M	5 pins	5m long cable
M12-F5T-10M	5 pins	10 m long cable

WINMAN WGVU Serisi Haberleşme Valfleri/WINMAN WGVU Series Communication Valves

008F11 Multi-protocol electrical control box



Specification

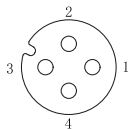
Support protocol	PROFINET
	ETHERNET/IP
	ETHERCAT
	CIEBS
Power connection	M12 male A-port 5 core
Bus communication interface (OUT)	M12 female D-port 4 core
Bus communication interface (IN)	
Cable type	Shielded twisted pair minimum STP CAT5/STP CAT5e, Compliant with IEEE 802.3
Data transmission rate	100 Mbps (PROFINET/ETHERCAT)
	10Mbps/100Mbps(Adaptive ETHERNET/IP)
Number of output coils	Up to 48 coils
Power consumption of valve island (I _{us})	≤0.1A (21.6...26.4VDC)
Total power consumption of solenoid valve (I _{ua})	≤4A (22.8...26.4VDC)
Operating temperature	-10 ~ 50 °C
Waterproof rating	IP54

Pins assignment

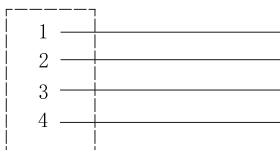
	Pinning	Corresponding name	
	1	UA	Actuator Power
	2	GND	Actuator Power
	3	US	Bus Power
	4	GND	Bus Power
	1	Tx+	Sending data +
	2	Rx+	Receiving data +
	3	Tx-	Sending data -
	4	Rx-	Receiving data -
	1	Tx+	Sending data +
	2	Rx+	Receiving data +
	3	Tx-	Sending data -
	4	Rx-	Receiving data -

WINMAN WGVU Serisi Haberleşme Valfleri/ WINMAN WGVU Series Communication Valves
LED display

LED	Display	Function
PF	Green light	ETHERNET/IP protocol
	Orange	PROFINET protocol
	Blue	ETHERCAT protocol
	White	CIEBS protocol
X1	Green always on	Operating status:Device is running normally
	Green flashing 1HZ	Standby: device is not configured
	Green red green alternate flashing	Self-test:Device is undergoing power-up test
	Red flashin 1HZ	Recoverable fault
	Red always on	Non-recoverable fault
	LED indicator off	US No input voltage
X2	Green always on	Connected
	Green flashing 1HZ	Not connected
	Green red green alternate flashing	Self-test:Device is undergoing power-up test
	Red flashin 1HZ	Connection timeout
	Red always on	IP repeated
	LED indicator off	US No input voltage or no IP address
L/A1	Green always on	Device (IN) connected to Ethernet
	Yellow flashing	Device (IN) sending/receiving Ethernet frames
	LED indicator off	Device (IN) not connected to Ethernet
L/A2	Green always on	Device (OUT) connected to Ethernet
	Yellow flashing	Device (IN) sending/receiving Ethernet frames
	LED indicator off	Device (IN) not connected to Ethernet
US	Green light	Input voltage normal
	Red flashin	Input voltage low (< 18 V)
UA	Green light	Input voltage normal
	Red flashin	Input voltage low (< 18 V)
	Red always on	Not present Output voltage(< 11 V)

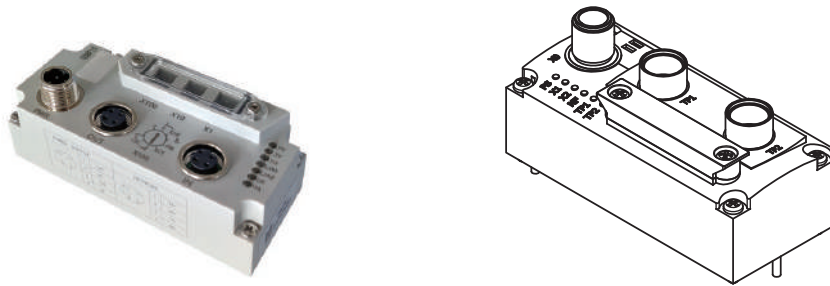
4-pin female connector - electrical control box power cable


Pin1:Brown
Pin2:White
Pin3:Blue
Pin4:Black



Type	Pinning	cable length
WCC-M415-0000-A-006-PH0434-030	4-pin straight female connector	3m long cable
WCC-M415-0000-1A-006PH0434-050		5m long cable
Electrical connection		M12 plug 4-pin straight female connector
Cable diameter (mm)		5
Number of conductors x cross-sectional area (mm ²)		4×0.34
Minimum bending radius R (mm)		50
Maximum supply voltage AC UB		250 V AC
Maximum supply voltage DC UB		250 V DC
Protection class		IP68
Operating temperature °C		-40~80
Cable material		PUR drag chain cable
Sheath color		Black

WINMAN WGVU Serisi Haberleşme Valfleri / WINMAN WGVU Series Communication Valves

WCEU-D24-PN protocol electrical control box (PROFINET protocol)

Specification

Support protocol	PROFINET
Power connection	M12 male A-port 5 core
Bus communication interface (TP1)	M12 female D-port 4 core
Bus communication interface (TP2)	
Cable type	Shielded twisted pair minimum STP CAT5/STP CAT5e, Compliant with IEEE 802.3
Data transmission rate	100 Mbps (PROFINET/ETHERCAT) 10Mbps/100Mbps(Adaptive ETHERNET/IP)
Number of output coils	Up to 48 coils
Power consumption of valve island (Ius)	≤0.1A (21.6...26.4VDC)
Total power consumption of solenoid valve (Iua)	≤4A (22.8...26.4VDC)
Operating temperature	-10 ~ 50 °C
Waterproof rating	IP54

Pins assignment

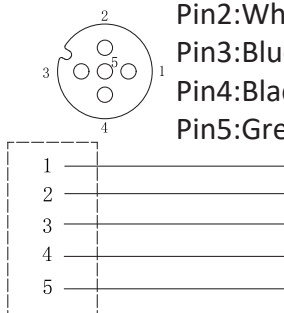
	Pinning	Corresponding name	
	1	Working pressure Electronic components/sensors (power system)	UEL/SEN 24V
	2	Load voltage Valve/outputs (power load)	UVAL/OUT 24V
	3	Working pressure	UEL/SEN 0V
	4	Load voltage	UVAL/OUT 0V
	5	Function ground (function earth)	FE
	1	Tx+	Sending data +
	2	Rx+	Receiving data +
	3	Tx-	Sending data -
	4	Rx-	Receiving data -
	1	Tx+	Sending data +
	2	Rx+	Receiving data +
	3	Tx-	Sending data -
	4	Rx-	Receiving data -

WINMAN WGVU Serisi Haberleşme Valfleri/ WINMAN WGVU Series Communication Valves
LED display

LED	Display	Function
PS Working pressure (Power System)	Green LED on	Normal operating condition Normal operating voltage(within the allowable range) Normal load voltage(within the allowable range)
	Green LED blinking (blinking frequency : 1 Hz)	Low operating voltage Dry required voltage Load voltage below the required voltage
	LED off	Abnormal operating voltage Operating voltage below the minimum voltage required for diagnostic function
Internal communication status between the X1 or X2 bus node and the connected product	Green LED on	Normal operating condition
	Green LED blinking (blinking frequency : 1 Hz)	Diagnostic status System power or auxiliary power undervoltage
	Red LED indicator lights up	Connected after commissioning Wrong device (device or non-compatible product with inconsistent hardware configuration in the control system)
	LED off	Product not connected to bus node
NF Network status/ network failure (Network Failure)	Red LED blinking (blinking frequency : 1 Hz)	Communication failure Communication failure or interruption between the control system and the bus node
	LED off	Normal operating condition
TP1/TP2 Network connection status (Link1/Link2)	Green LED on	Normal operating condition Network connection is normal
	Two green LEDs TP1 and TP2 indicate flashing (flashing frequency: 1Hz)	in order to locate the connected product ("module location"), e.g. hardware configuration in the control system or failure findin
	LED off	Without network connection

5-pin female connector- electrical control box power cable


Pin1:Brown
 Pin2:White
 Pin3:Blue
 Pin4:Black
 Pin5:Grey/GreenNellow



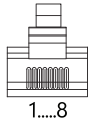
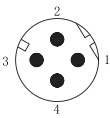
Type	Pinning	cable length
WCC-M415-0000-1A-006PH0534-030	5-pin straight female connector	3m long cable
WCC-M415-0000-1 A-006-PH0534-050		5m long cable
Electrical connection		M12 plug 4-pin straight female connector
Cable diameter (mm)		5
Number of conductors x cross-sectional area (mm ²)		5×0.34
Minimum bending radius R (mm)		50
Maximum supply voltage AC UB		125 V AC
Maximum supply voltage DC UB		125 V DC
Protection class		IP68
Operating temperature °C		-40~80
Cable material		PUR drag chain cable
Sheath color		Grey

WINMAN WGVU Serisi Haberleşme Valfleri/WINMAN WGVU Series Communication Valves

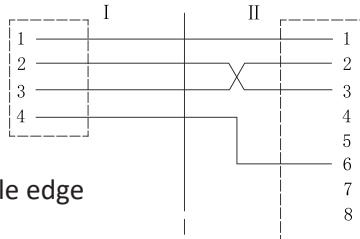
4-pin female connector - electrical control box power cable



Type	Pinning	Cable length
WCC-M414-E834-5D-033-PHGPNC-005	M12 straight male head/ RJ45 straight male head	0.5m long cable
WCC-M414-E834-5D-033-PHGPNC-015		1.5 m long cable
WCC-M414-E834-5D-033-PHGPNC-050		5m long cable



Pin1:Yellow
Pin2:White
Pin3:Orgen
Pin4:Blue

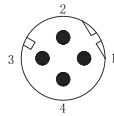
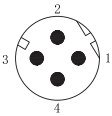


shield to buckle edge

Electrical connection	M12 plug 4-pin straight female connector
Cable diameter (mm)	5
Number of conductors x cross-sectional area (mm ²)	4 × 22 AWG
Minimum bending radius R (mm)	50
Maximum supply voltage AC UB	125 V AC
Maximum supply voltage DC UB	125 V AC
Protection class	IP68
Operating temperature °C	-40~80
Cable material	PUR drag chain cable
Sheath color	Green



Type	Pinning	Cable length
WCC-M414-M414-5D-033-PHGPNC-005	M12 straight male head/M12 straight male head	0.5 m long cable
WCC-M414-M414-5D-033-PHGPNC-015		1.5 m long cable
WCC-M414-M414-5D-033-PHGPNC-050		5m long cable



Pin1:Yellow
Pin2:White
Pin3:Orgen
Pin4:Blue

Electrical connection	M12 plug 4-pin straight female connector
Cable diameter (mm)	5
Number of conductors x cross-sectional area (mm ²)	4 × 0.34
Minimum bending radius R (mm)	50
Maximum supply voltage AC UB	125 V AC
Maximum supply voltage DC UB	125 V AC
Protection class	IP68
Operating temperature °C	-40~80
Cable material	PUR drag chain cable
Sheath color	Green

