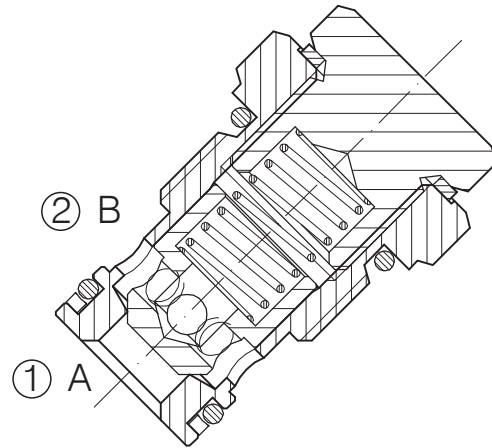
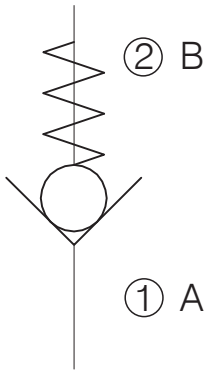


**VNR-C-12-34-...**

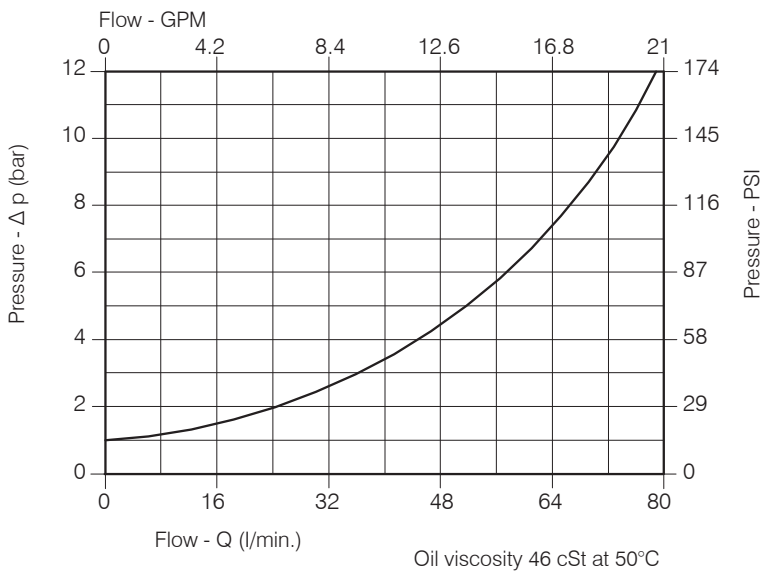
**RÜCKSCHLAGVENTIL/CARTRIDGE CHECK VALVE**



**Leistung/Performance**

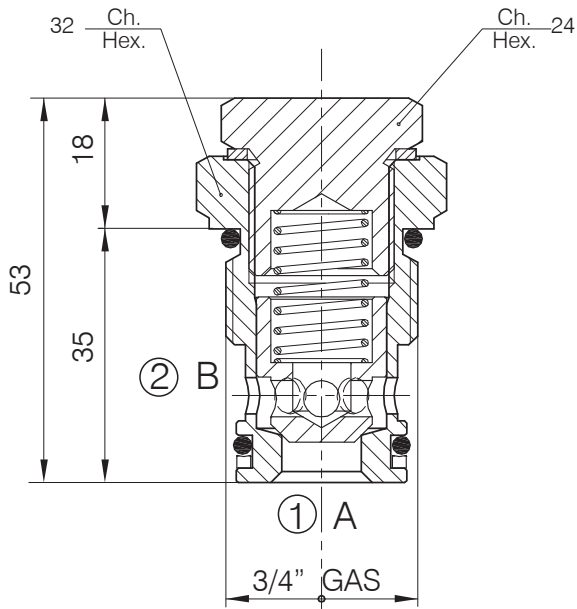
Bewertet grÖÙe/Rated size	DN 12
Max Arbeitsdruck/ Min/Max flow-rate	1/80 l/min - 0.26/21.1 GPM
Min / Max-Durchfluss/Max working pressure	350 bar - 5075 PSI
Zimmertemperatur/ Room temperature	-30°C + 50°C
Öltemperatur/Oil temperature	-30°C + 80°C
Empfohlene Filtration/Recommended filtration	50 micron
Anzugsdrehmoment/Tightening torque	145 ÷ 158 Nm
Gewicht/Weight	0.179 Kg

**Leistungsdetails/Performance Details**

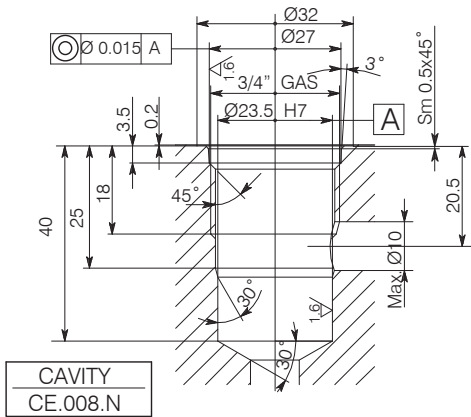


VNR-C-12-34-...

Hydraulikventile und integrierte Komponenten/Hydraulic valves and integrated components



Cavity CE.008.N



Der Ventilsitz sollte perfekt ausgerüstet sein/The valve seat should be perfectly tooled

Ordering Code

3 . 3 5 . 0 . J . 0

**Berstdruck/Cracking pressure**

J : 1 bar

Feder (schwarz)/Spring (black)

W : 6-8 bar

Spring (yellow)/Feder (gelb)