

Steckverschraubungen/Push-in Fittings

WPMFT SERIES



Produkteigenschaften/Product features

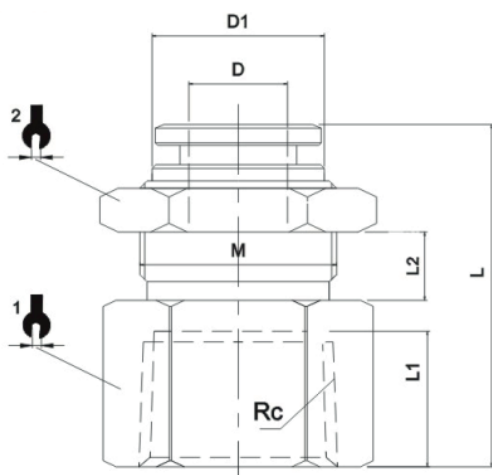
Es besteht aus pneumatischen Rohrverbindungsstücken aus Kupfer nicht nur der Körper, sondern auch die Hülse bestehen aus Kupfer, was gut ist für die flammfeste hitzebeständige und Spritzleistung.

It's made of copper pneumatic piping joints Not only the body but also the sleeve, both of them are made from copper, which is good for flame resistance, heat resistance and splash performance.

Spezialität/Speciality

Betriebstemperatur/Operating Temperature	-20~+80°C
Betriebsdruckbereich/Operating Pressure	0-1.0MPa
Fluid/Fluid	Luft, Vakuum/Air, Vacuum
Anwendbares Rohr/Applicable Tube	PU Polyurethan und Nylon/PU Polyurethane and Nylon

Dimension



MODEL	ϕD	Rc	L	L1	L2	$\phi D1$	1	2	M
WPMFT04-01	4	Rc1/8	23	8.5	6	8.5	14	14	M10X1
WPMFT04-02	4	Rc1/4	25.5	11	6	8.5	17	14	M10X1
WPMFT06-01	6	Rc1/8	28	8.5	7	12	17	17	M14X1
WPMFT06-02	6	Rc1/4	30.5	11	7	12	17	17	M14X1
WPMFT06-03	6	Rc3/8	31.5	12	7	12	21	17	M14X1
WPMFT08-01	8	Rc1/8	29	8.5	7.5	14	19	19	M16X1
WPMFT08-02	8	Rc1/4	31.5	11	7.5	14	19	19	M16X1
WPMFT08-03	8	Rc3/8	32.5	12	7.5	14	21	19	M16X1
WPMFT08-04	8	Rc1/2	34.5	14	7.5	14	24	19	M16X1
WPMFT10-01	10	Rc1/8	31	8.5	9.5	16	21	21	M18X1
WPMFT10-02	10	Rc1/4	33.5	11	9.5	16	21	21	M18X1
WPMFT10-03	10	Rc3/8	34.5	12	9.5	16	21	21	M18X1
WPMFT10-04	10	Rc1/2	36.5	14	9.5	16	24	21	M18X1
WPMFT12-02	12	Rc1/4	35	11	10	18	24	24	M20X1
WPMFT12-03	12	Rc3/8	36	12	10	18	24	24	M20X1
WPMFT12-04	12	Rc1/2	38	14	10	18	24	24	M20X1