

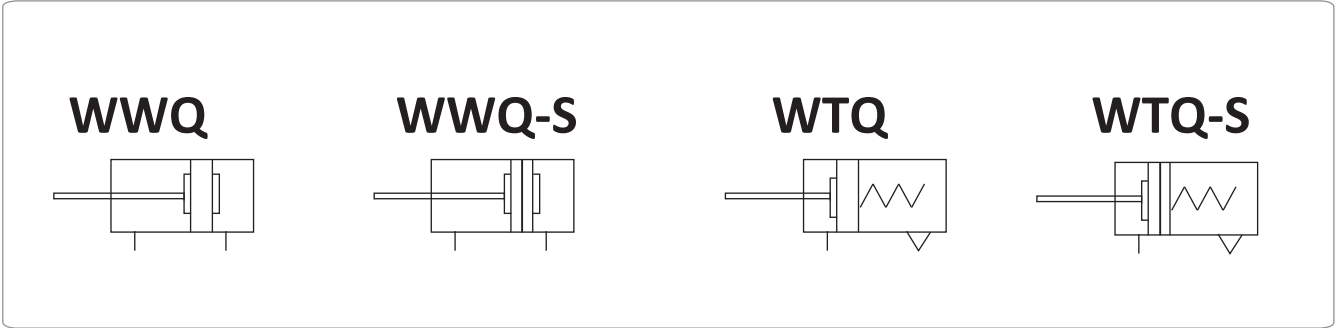
WINMAN WWQ / WTQ Serisi Stopper Silindirler / WWQ / WTQ Stopper Cylinders



Teknik Özellikler / Technical Data

Bore Size (mm)	20	25	32	40	50
Fluid	Double acting type, Single acting-pull type				
Action	Air (to be filtered by 40µ m filter element)				
Operating Pressure	Double acting type	0.15~1.0 MPa (23~145psi)			
	Single acting-pull type	Ø 20: 0.25~1.0 MPa (35~145psi) others: 0.2~1.0MPa (28~145psi)			
Proof pressure	1.5MPa (215psi)				
Temperature °C	-2.0~70				
Range of stroke tolerance	10 0				
Cushion type	Bumper				
Lubrication	Non required				
Mounting type	Thru hole or screw hole				
Stopper type	Ø20 / Ø25	Round rod, Flat rod / Roller			
	Ø32 / Ø40 / Ø50	Round rod, Flat rod/Roller Round rod, Flat rod/Roller, Shock less stopper (with absorber)			
Port size ①	M5 X 0,8			1/8"	

Sembol / Symbol



Ürün Özelliği / Product Feature

- 1 JIS standard is implemented.
2. Widening the piston rod can effectively improve the impact resistance ability of the cylinder.
3. The installation height is adjustable and several rod selected. The stopper cylinder with effect.
4. Shockless stopper cylinder is attached with self-lock device, which can prevent the returning of rebound of rocker caused by bar objects.
5. Several series and specifications for stopper cylinders can be selected.

Sipariş Kodu / Ordering Code

WWQ S - 50 X 20 K □ - P

Model : _____

WWQ : Stopper cylinder (Height locked, double acting type)

WTQ : Stopper cylinder (Height locked, single acting-pull type)

Magnet: _____

Blank: Without magnet
S: With magnet

Bore size: _____

20 25 32 40 50

Stroke: _____

Bore size	Stroke (mm)
20,25,32	10 15 20
40,50	20 25 30

① **Thread type**

P: PT
T: NPT
G: G

Self-lock function

Blank: Without self-lock
F: With self-lock

Stopper

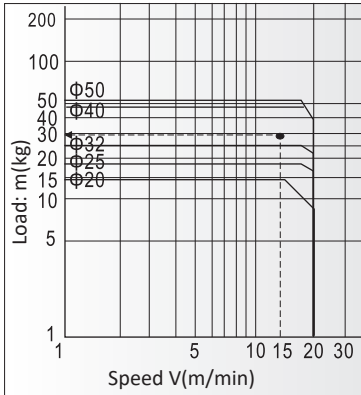
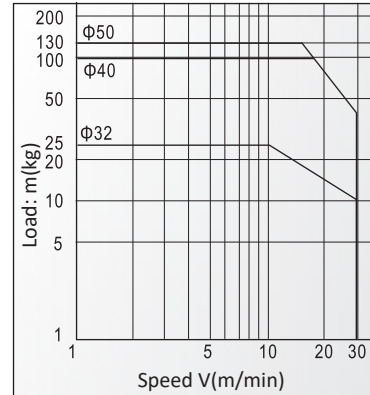
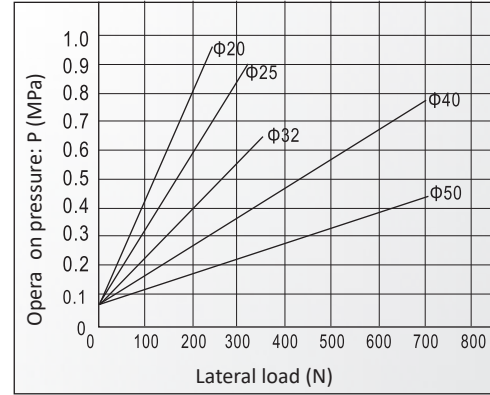
C: Round rod
B: Flat rod
R: Roller
K: Shockless stopper (adjustable absorber)

[Note1] When the thread is standard, the code is blank.

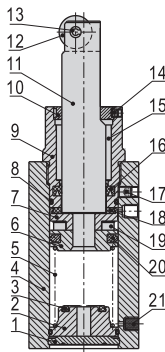
WINMAN WWQ / WTQ Serisi Stopper Silindirler / WWQ / WTQ Stopper Cylinders

How to select

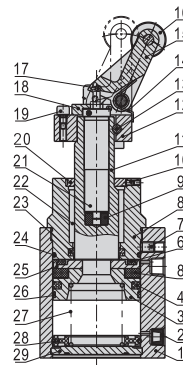
Round rod, Flat rod, roller


 Shockless stopper
(With adjustable absorber)

 Lateral load & operation pressure
Round rod, Flat rod, roller


Installation and application

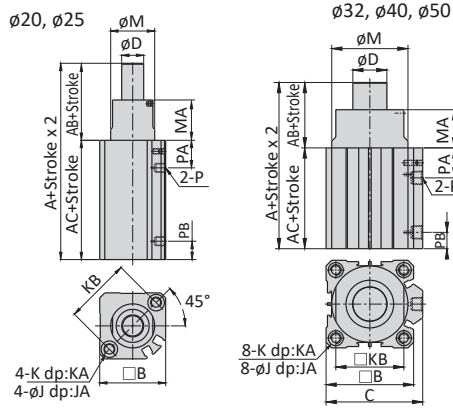
WTQ-R


No.	Item	Material
1	Back cover	Aluminum alloy
2	Spring holder	Aluminum alloy
3	Bumper	TPU
4	Body	Aluminum alloy
5	Spring	Spring steel
6	Piston	Aluminum alloy
7	Magnet holder	Aluminum alloy
8	O-ring	NBR
9	Front cover	Aluminum alloy
10	Lock ring	Powder metallurgy
11	Piston rod	Carbon steel with 20 μ m chrome plated
12	Roller	Cast steel
13	Spring pin	Spring steel
14	Countersink screw	Carbon steel
15	Sliding bushing	Bronze powder metallurgy
16	Packing	NBR
17	Countersink screw	Carbon steel
18	Bumper	TPU
19	Magnet	Plastic
20	Piston seal	NBR
21	Slinger	Sintered bronze particle

WTQ-K (ø32-ø50)


No.	Item	Material
1	Body	Aluminum alloy
2	Slinger	Sintered bronze particle
3	Piston	Aluminum alloy
4	Piston seal	NBR
5	Magnet	Plastic
6	Bumper	TPU
7	Countersink screw	Carbon steel
8	Front cover	Aluminum alloy
9	Absorber fixing and adjust seat	POM
10	Countersink screw	Carbon steel
11	Piston rod	Carbon steel with 20 μ m chrome plated
12	Mounting seat	Nodular cast iron
13	Lock pin	Cast steel
14	Torsion spring	Spring steel
15	Rocker	Cast steel
16	Roller	Mild steel
17	Steel ball	Free cutting steel
18	Obstruction block	Powder metallurgy
19	Cancel cap	Aluminum alloy
20	Locking cushion	Powder metallurgy
21	Shock absorber	
22	Bushing	Sintered bronze particle
23	O-ring	NBR
24	O-ring	NBR
25	Magnet washer	Aluminum alloy
26	Bumper	Wear resistant material
27	Spring	Spring steel
28	Cushion	POM
29	Back cover	Aluminum alloy

WINMAN WWQ / WTQ Serisi Stopper Silindirler / WWQ / WTQ Stopper Cylinders

Round rod (WWQ-C, WTQ-C)


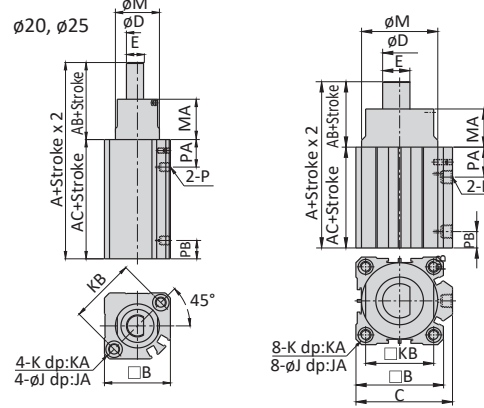
Bore Size / Item	A	AB	AC	B	C	D	J	JA
20	67	22	45	36	-	12	9	7
25	68	20	48	40	-	16	9	7
32	68	20	48	45	49.5	20	9	7
40	80.5	28	52.5	53	57	25	9	7
50	82	28	54	64	71	25	11	8

Bore Size / Item	K	KA	KB	M	MA	P	PA	PB
20	M6X1.0	10	36	24	22	M5X0.8	16.5	9
25	M6X1.0	10	40	30	20	M5X0.8	18	9
32	M6X1.0	10	34	36	20	1/8"	20	10
40	M6X1.0	10	40	44	28	1/8"	20	11
50	M8X1.25	14	50	56	28	1/8"	22	12

Note: The type with magnet and the type without magnet have the same dimension.

Flat rod (WWQ-B, WTQ-B)

ø32, ø40, ø50



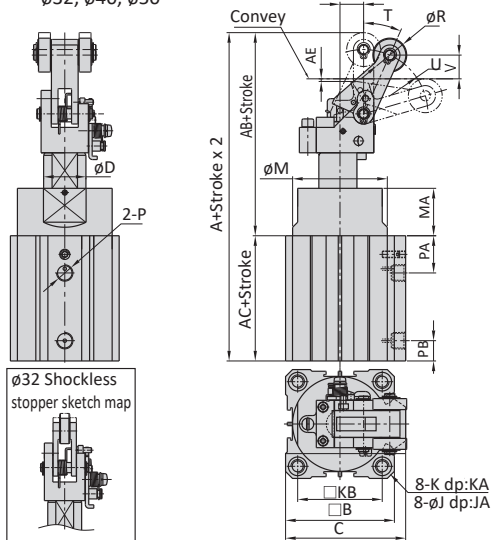
Bore Size / Item	A	AB	AC	B	C	D	E	J	JA
20	67	22	45	36	-	12	10	9	7
25	68	20	48	40	-	16	14	9	7
32	68	20	48	45	49.5	20	18.5	9	7
40	80.5	28	52.5	53	57	25	22.5	9	7
50	82	28	54	64	71	25	22.5	11	8

Bore Size / Item	K	KA	KB	M	MA	P	PA	PB
20	M6X1.0	10	36	24	22	M5X0.8	16.5	9
25	M6X1.0	10	40	30	20	M5X0.8	18	9
32	M6X1.0	10	34	36	20	1/8"	20	10
40	M6X1.0	10	40	44	28	1/8"	20	11
50	M8X1.25	14	50	56	28	1/8"	22	12

Note: The type with magnet and the type without magnet have the same dimension.

Shockless stopper (WWQ-K(F), WTQ-K(F))

ø32, ø40, ø50



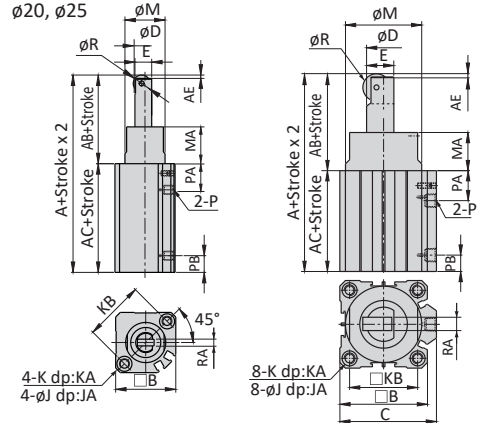
Bore Size / Item	A	AB	AC	AE	B	C	D	J	JA	K	KA	KB
32	120	72.5	48	1	45	49.5	20	9	7	M6X1.0	10	34
40	152.5	100	52.5	1.5	53	57	25	9	7	M6X1.0	10	40
50	154	100	54	1.5	64	71	25	11	8	M8X1.25	14	50

Bore Size / Item	M	MA	P	PA	PB	R	S	T	U	V
32	36	20	1/8"	20	10	15	11.5	28	24.5	4.5
40	44	28	1/8"	20	11	20	14	24	38	14
50	56	28	1/8"	22	12	20	14	24	38	14

Note: The type with magnet and the type without magnet have the same dimension. The type with self-lock and the type without self-lock have the same dimension.

Roller (WWQ-R, WTQ-R)

ø32, ø40, ø50



Bore Size / Item	K	KA	KB	M	MA	P	PA	PB	R	RA
20	M6X1.0	10	36	24	22	M5X0.8	16.5	9	10	4
25	M6X1.0	10	40	30	20	M5X0.8	18	9	12	6
32	M6X1.0	10	34	36	20	1/8"	20	10	20	8
40	M6X1.0	10	40	44	28	1/8"	20	11	20	8
50	M8X1.25	14	50	56	28	1/8"	22	12	20	8

Note: The type with magnet and the type without magnet have the same dimension.